

Presentation to McLean County Criminal Justice Coordinating Council

Frank D. Beck, Stevenson Center
Ed Wells, Criminal Justice Sciences
Illinois State University

July 11, 2013

**Comparison of Number of Persons, Average Length of Stay, and Total Bed Days from
January 2007 through June 2013 (Pretrial and Sentence Combined)**

Number of Separate Bookings, 2007-2012						
	2007	2008	2009	2010	2011	2012
CF Class 1	325	347	318	289	271	280
CF Class M or X	69	73	67	61	65	69
CF Class 2	377	394	410	444	460	462
CF Class 3	447	428	418	415	333	386
CF Class 4	699	737	745	662	604	645
CM Class A	1193	1346	1248	1076	1104	1076
CM Class B	78	84	60	55	50	48
CM Class C	62	60	65	46	55	70
DUI/Traffic	172	182	220	227	263	264
Traffic	403	409	326	324	332	334
Generic Code	17	24	33	69	39	33
No Charge	418	423	474	449	464	366
Total	4260	4507	4384	4117	4040	4033

Number of Separate Bookings for the First Six months of Each Year, 2007-2013							
	2007	2008	2009	2010	2011	2012	2013
CF Class 1	191	205	181	158	154	168	197
CF Class M or X	35	41	44	33	45	41	51
CF Class 2	199	216	204	239	251	222	277
CF Class 3	250	223	203	219	172	190	242
CF Class 4	363	370	413	389	338	352	332
CM Class A	630	672	650	524	612	542	472
CM Class B	36	50	33	24	18	25	33
CM Class C	40	26	36	27	23	31	34
DUI/Traffic	91	99	97	112	134	139	101
Traffic	230	237	168	163	171	187	131
Generic Code	5	11	13	30	21	19	14
No Charge	217	199	229	219	228	185	199
Total	2287	2349	2271	2137	2167	2101	2083

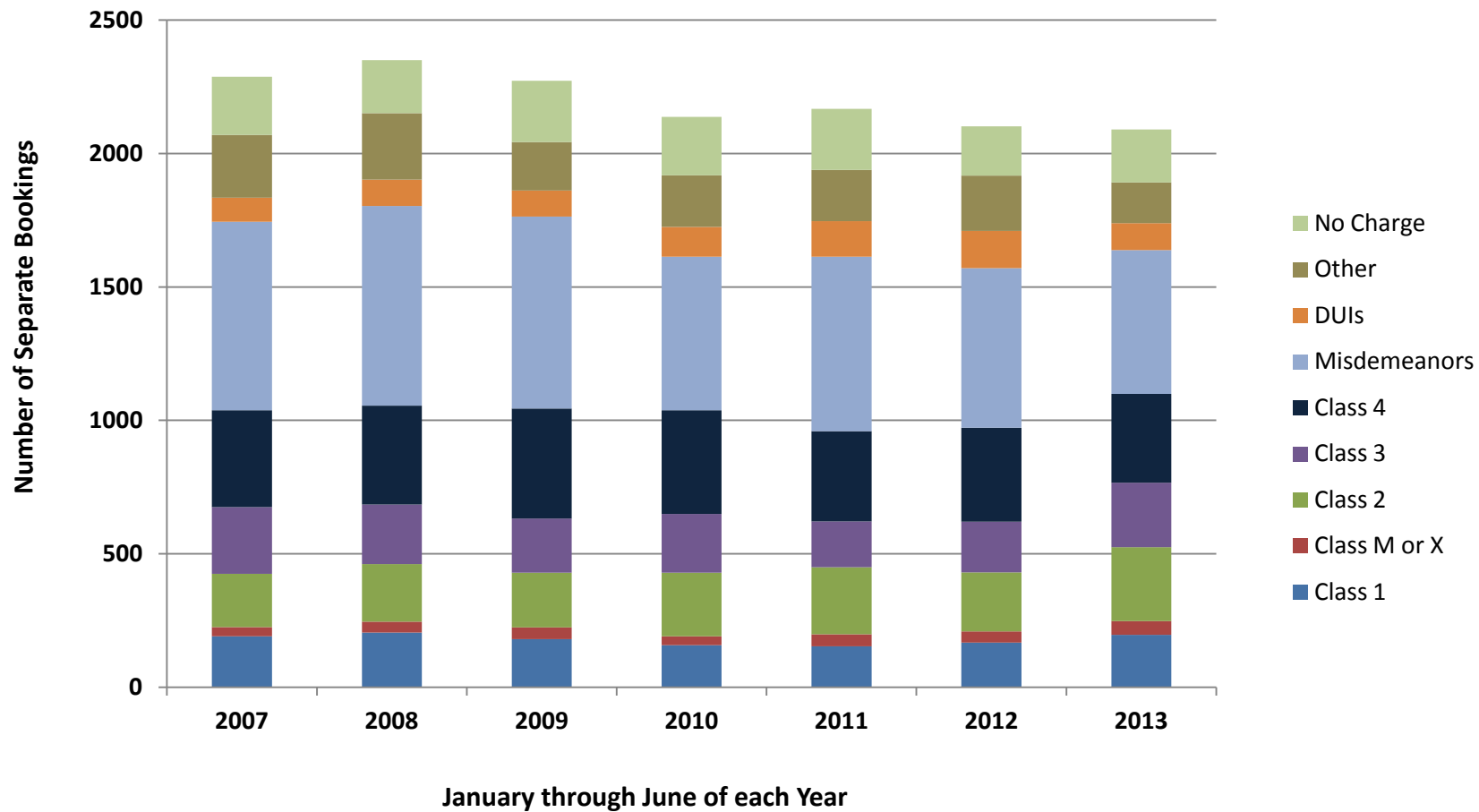
Average Bed Days Used per Booking, 2007-2012						
	2007	2008	2009	2010	2011	2012
CF Class 1	63	59	63	64	65	76
CF Class M or X	85	99	83	110	86	115
CF Class 2	35	44	34	33	38	34
CF Class 3	23	26	22	31	25	21
CF Class 4	20	23	23	23	25	23
CM Class A	8	10	9	7	8	7
CM Class B	10	10	6	5	5	8
CM Class C	3	3	5	2	7	5
DUI/Traffic	8	12	10	10	8	8
Traffic	15	15	13	16	11	12
Generic Code	1	2	2	2	2	2
No charge	3	3	3	3	3	3

Average Bed Days Used for the First Six months of Each Year, 2007-2013							
	2007	2008	2009	2010	2011	2012	2013
CF Class 1	55	51	57	56	55	60	54
CF Class M or X	75	73	72	80	70	86	84
CF Class 2	29	40	30	30	33	32	34
CF Class 3	22	23	17	28	23	17	18
CF Class 4	19	21	20	22	24	24	20
CM Class A	8	10	9	7	9	7	4
CM Class B	9	10	7	6	4	9	8
CM Class C	3	2	4	2	4	7	2
DUI/Traffic	6	10	10	12	9	7	9
Traffic	15	16	13	13	12	10	15
Generic Code	1	2	2	2	2	2	3
No charge	3	2	3	3	3	2	3

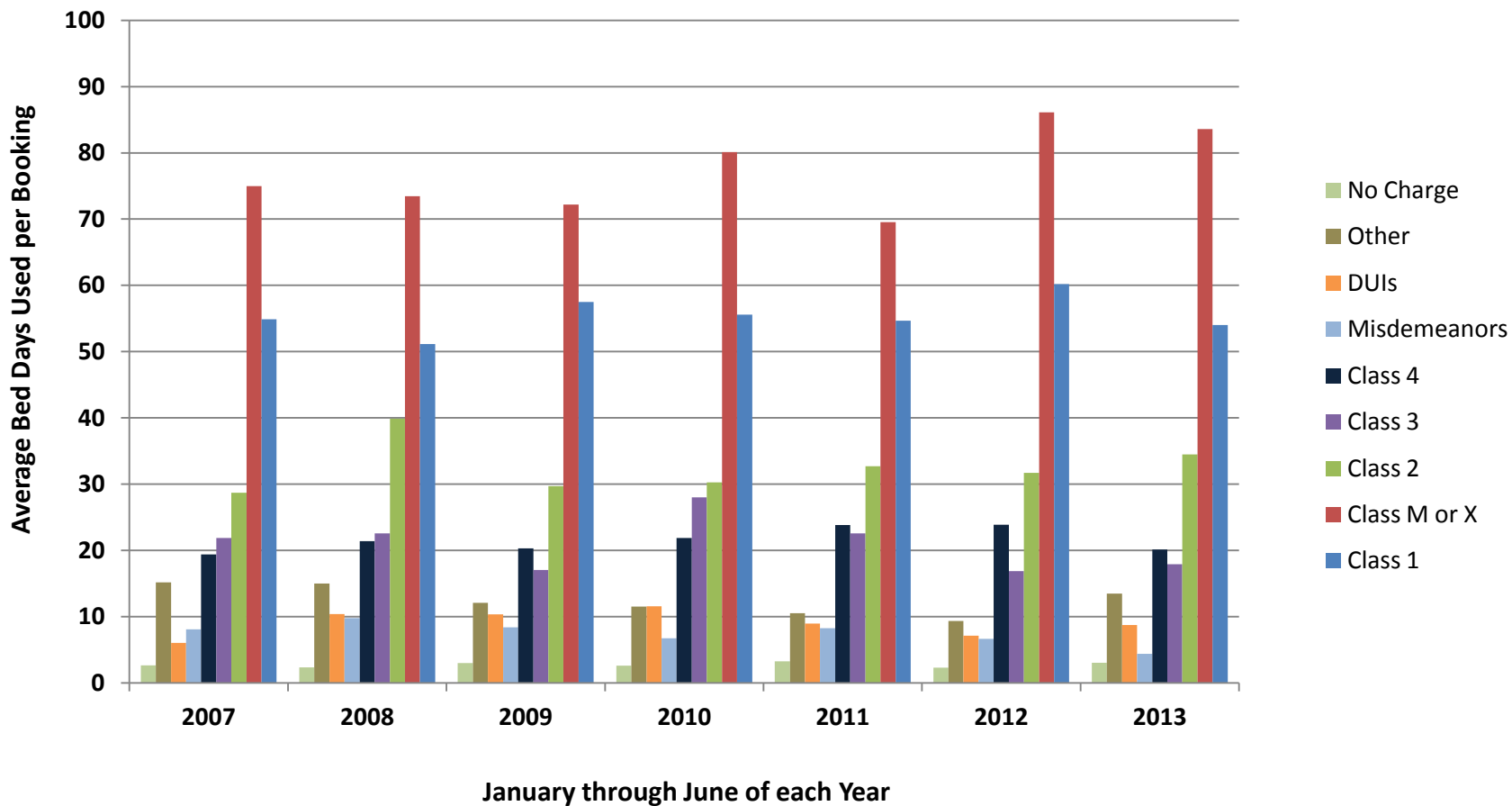
Total Bed Days Used, 2007-2012						
	2007	2008	2009	2010	2011	2012
CF Class 1	20319	20631	20063	18574	17725	21169
CF Class M or X	5878	7249	5579	6687	5583	7925
CF Class 2	13257	17257	13753	14619	17653	15593
CF Class 3	10450	10999	9056	12942	8421	8223
CF Class 4	14232	16735	16769	15512	15219	14995
CM Class A	9163	13563	10894	7496	9077	7202
CM Class B	814	865	376	271	264	392
CM Class C	187	163	322	97	402	319
DUI/Traffic	1356	2135	2199	2293	2089	2044
Traffic	6198	6265	4180	5127	3597	3948
Generic Code	25	39	62	111	78	57
No Charge	1283	1299	1542	1279	1265	941
Total	83162	97200	84795	85008	81373	82808

Total Bed Days Used for the First Six months of Each Year, 2007-2013							
	2007	2008	2009	2010	2011	2012	2013
CF Class 1	10482	10487	10405	8780	8419	10110	10643
CF Class M or X	2625	3011	3176	2644	3129	3531	4263
CF Class 2	5713	8612	6058	7228	8206	7032	9550
CF Class 3	5470	5033	3456	6129	3882	3203	4338
CF Class 4	7040	7915	8383	8499	8055	8407	6681
CM Class A	5236	6744	5622	3673	5238	3527	2005
CM Class B	323	513	237	138	63	223	274
CM Class C	131	44	155	48	84	215	71
DUI/Traffic	549	1028	1003	1293	1199	990	881
Traffic	3553	3715	2167	2178	1975	1888	1992
Generic Code	7	19	29	46	42	41	42
No Charge	572	464	683	565	741	423	600
Total	41701	47585	41374	41221	41033	39590	41340

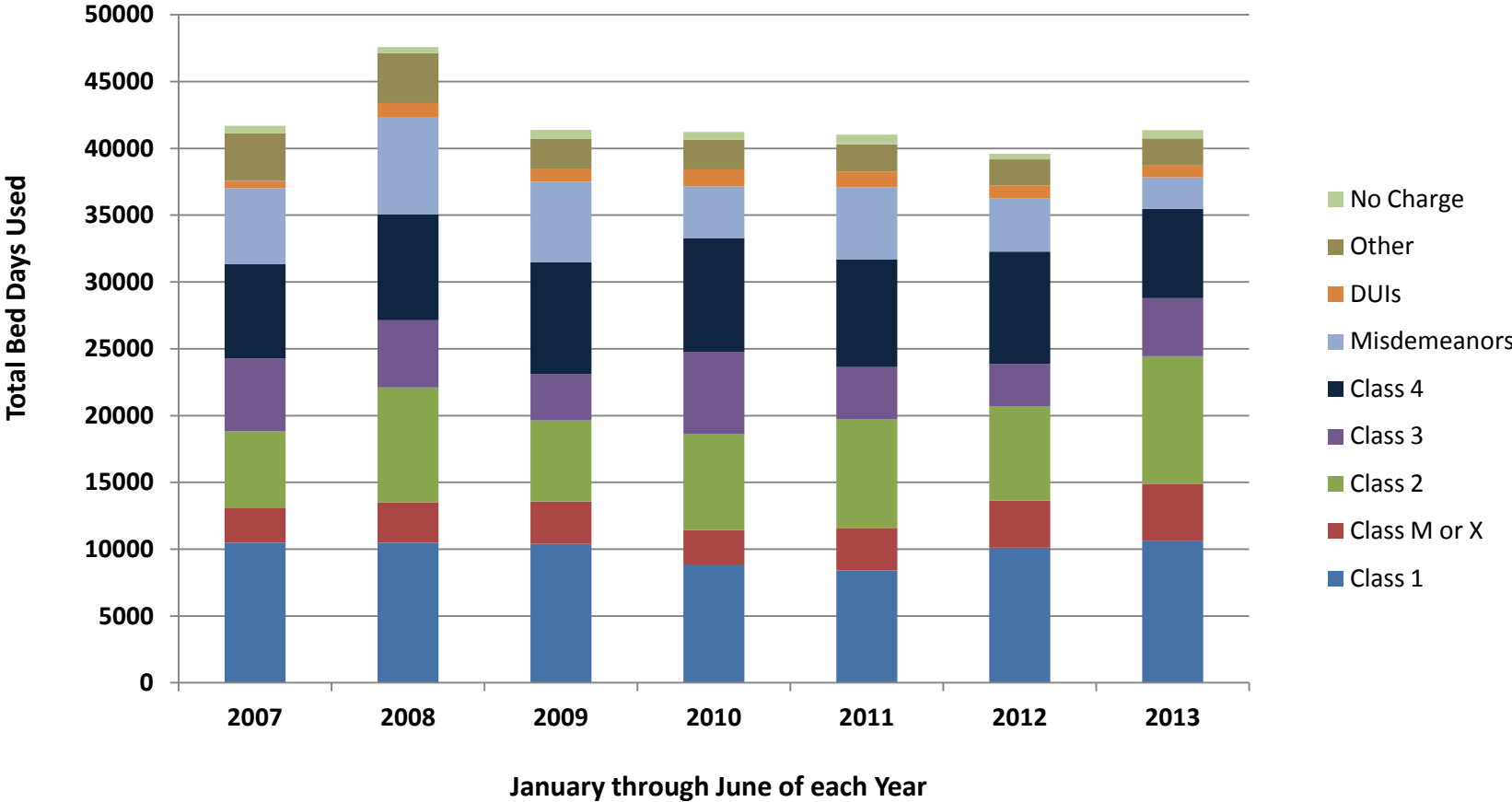
Number of Separate Bookings, Comparison of January through June for each Year (Pretrial and Sentence)



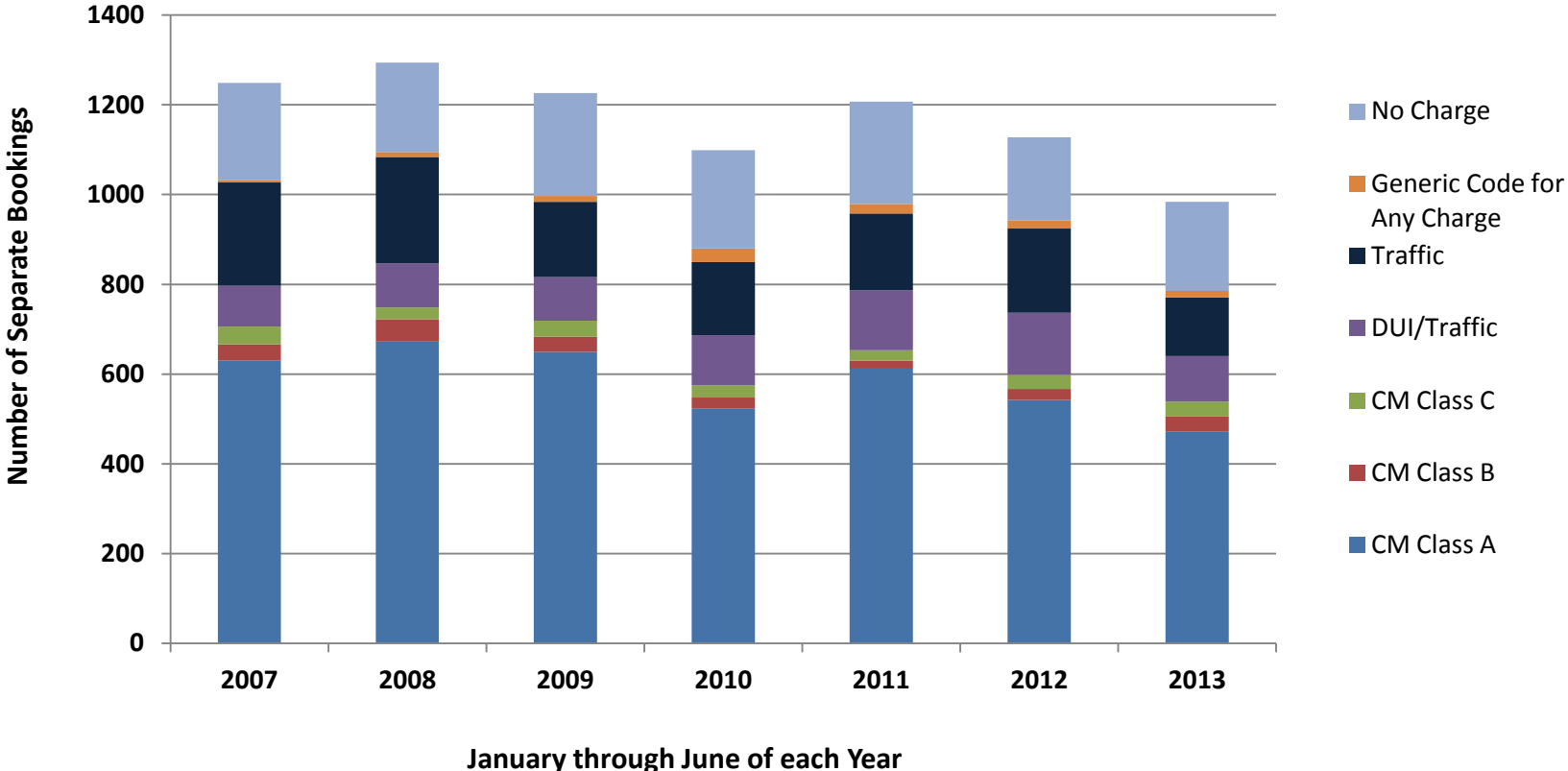
Average Bed Days Used by Severity of Charge, Comparison of January through June of each Year (Pretrial and Sentence)



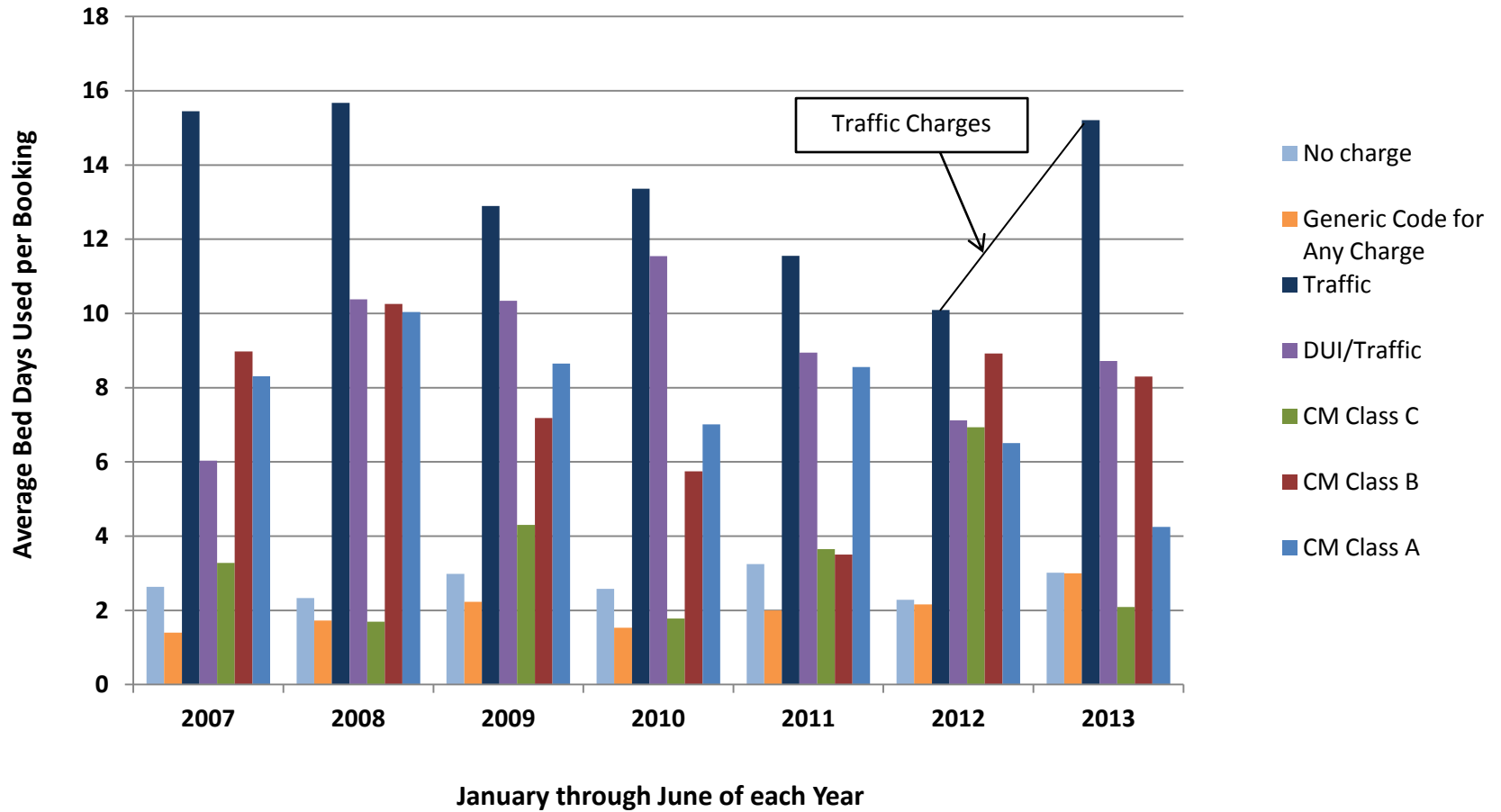
Total Bed Days Used by Severity of Charge, Comparison of January through June of each Year (Pre-trial and Sentence)



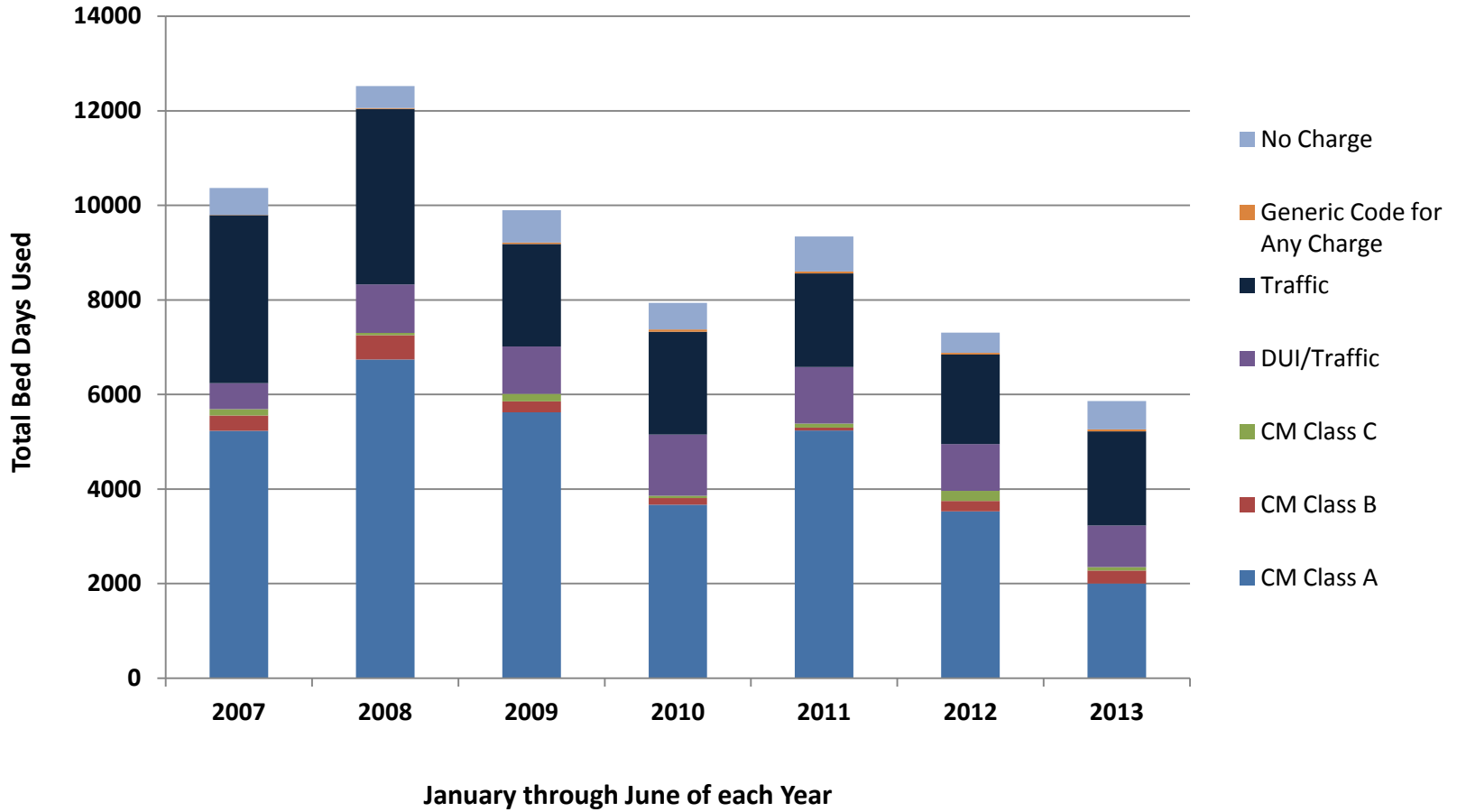
Number of Separate Bookings for Lesser Offenses, Comparison of January through June of each Year (Pretrial and Sentence)



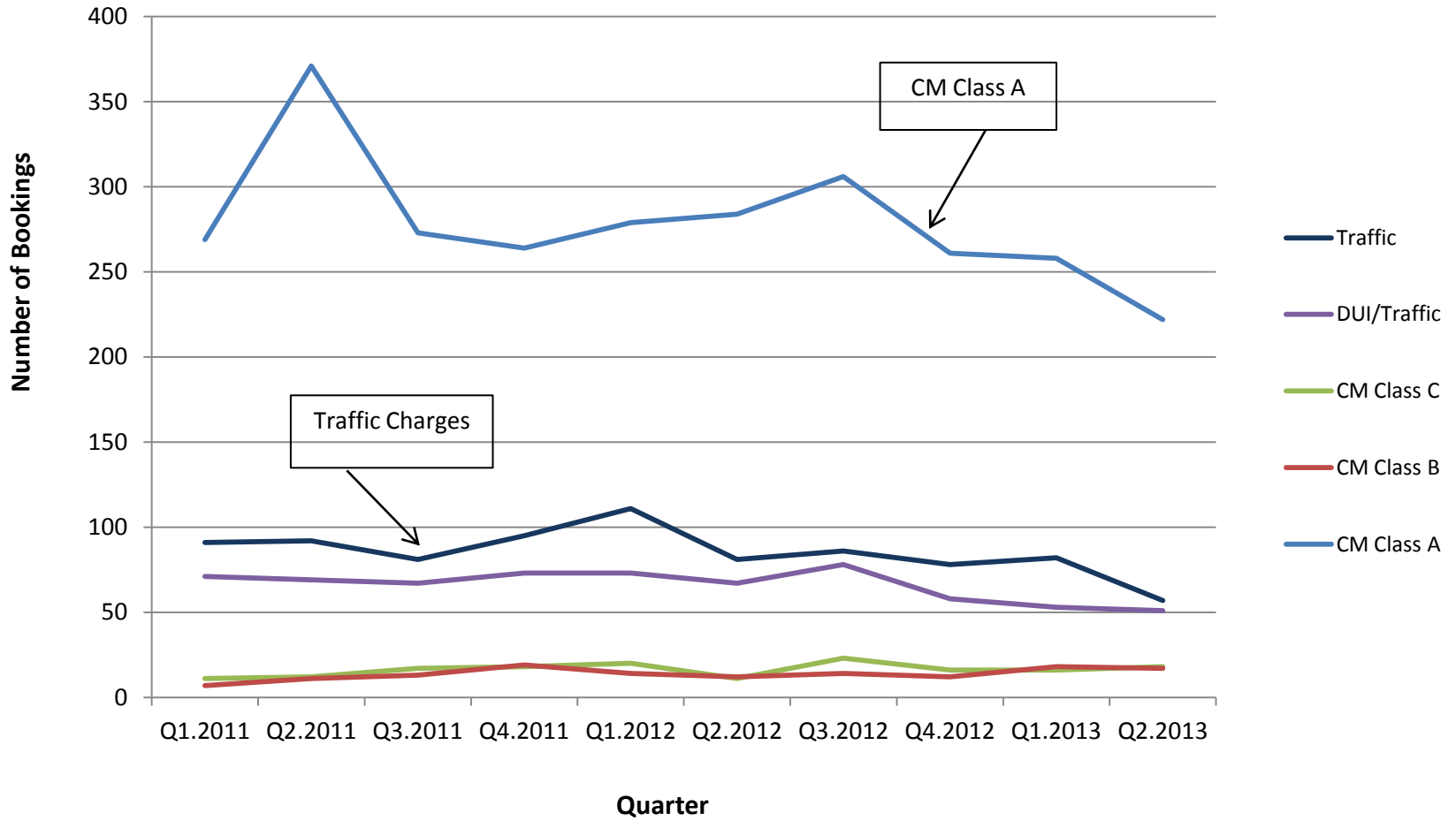
Average Bed Days Used by Severity of Charge, Comparison of January of through June of each Year (Pretrial and Sentence)



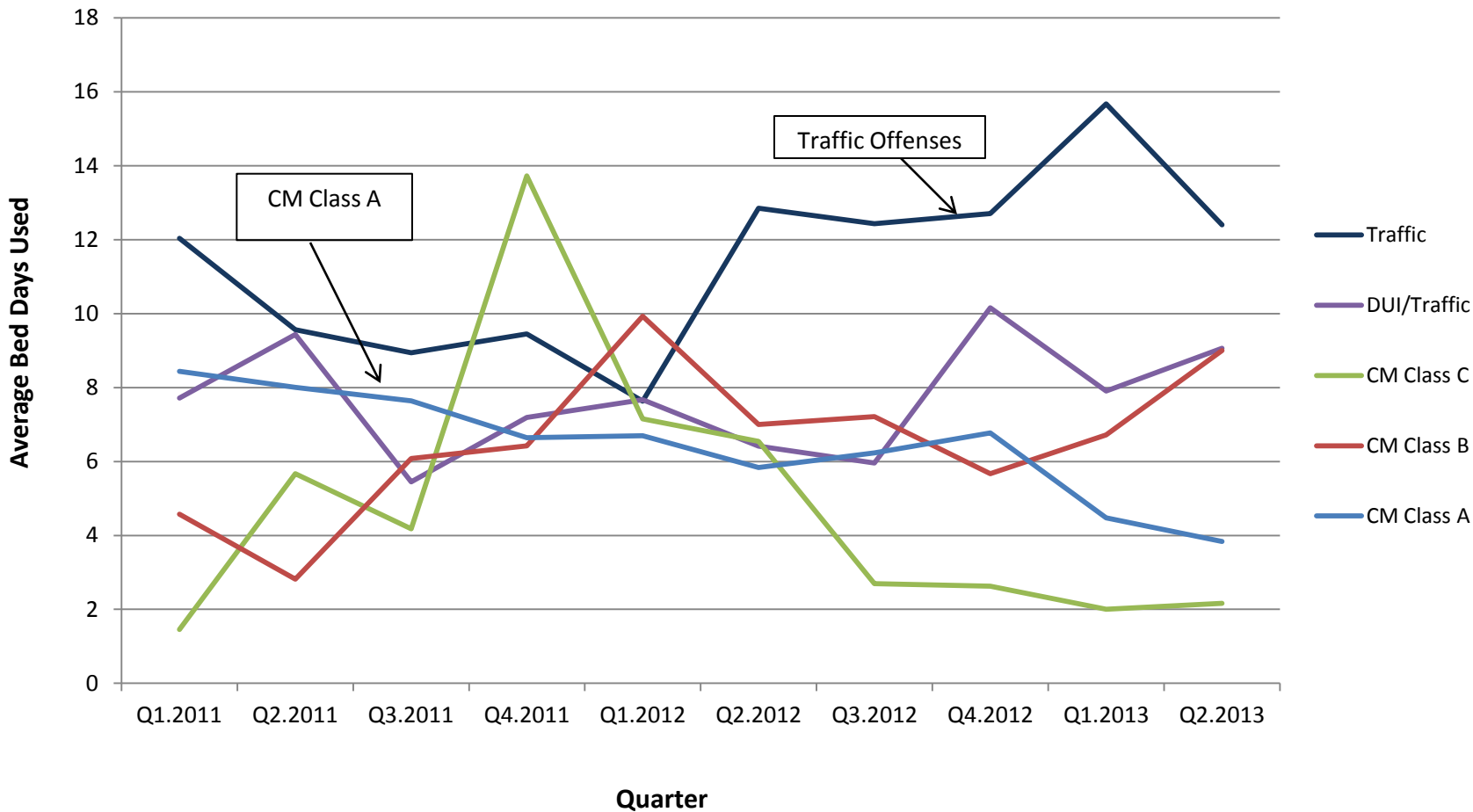
Total Bed Days Used by Severity of Charge, Comparison of January through June of each Year (Pre-trial and Sentence)



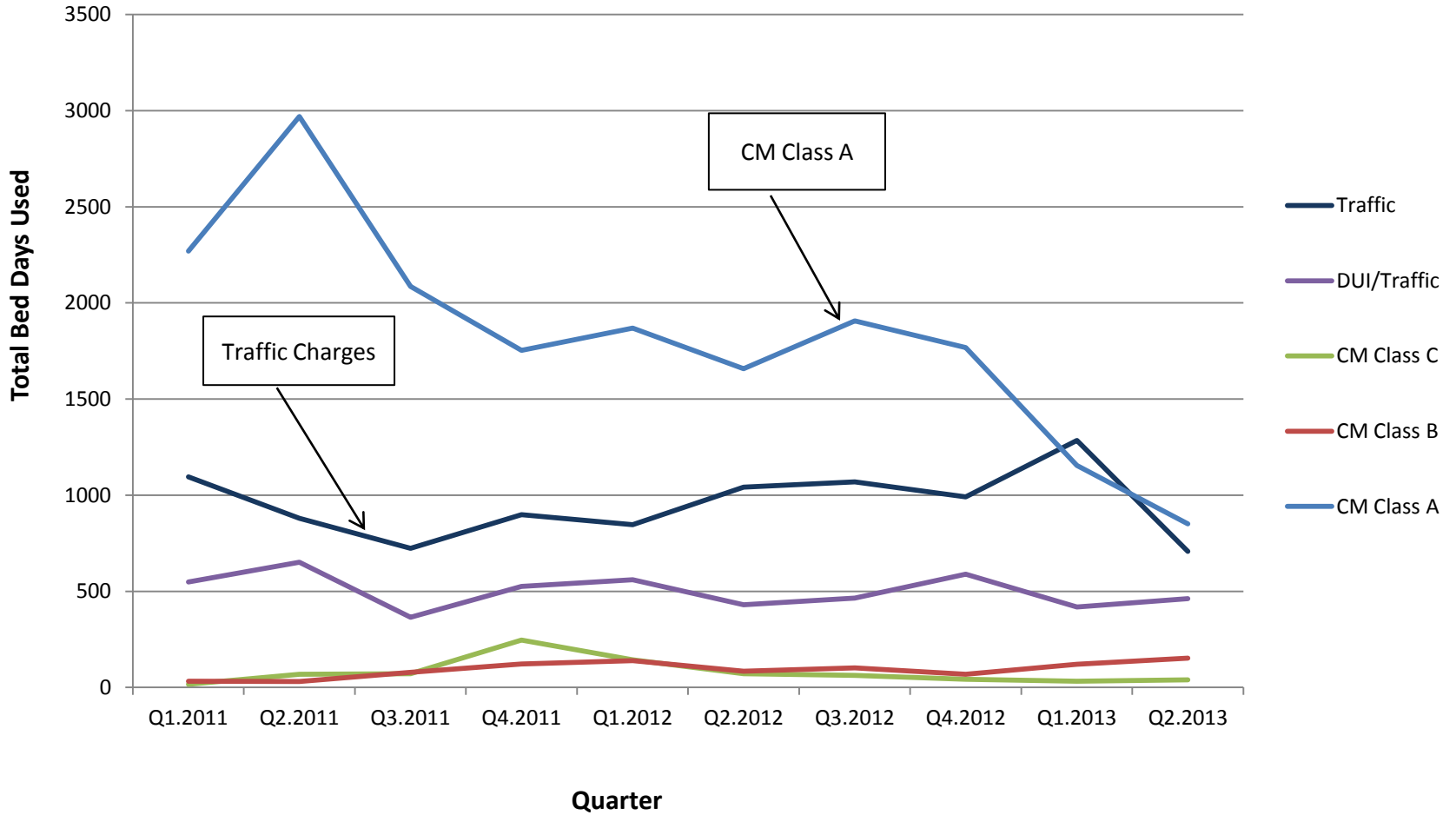
Number of Bookings for Lesser Offenses by Quarter, 2011-2013



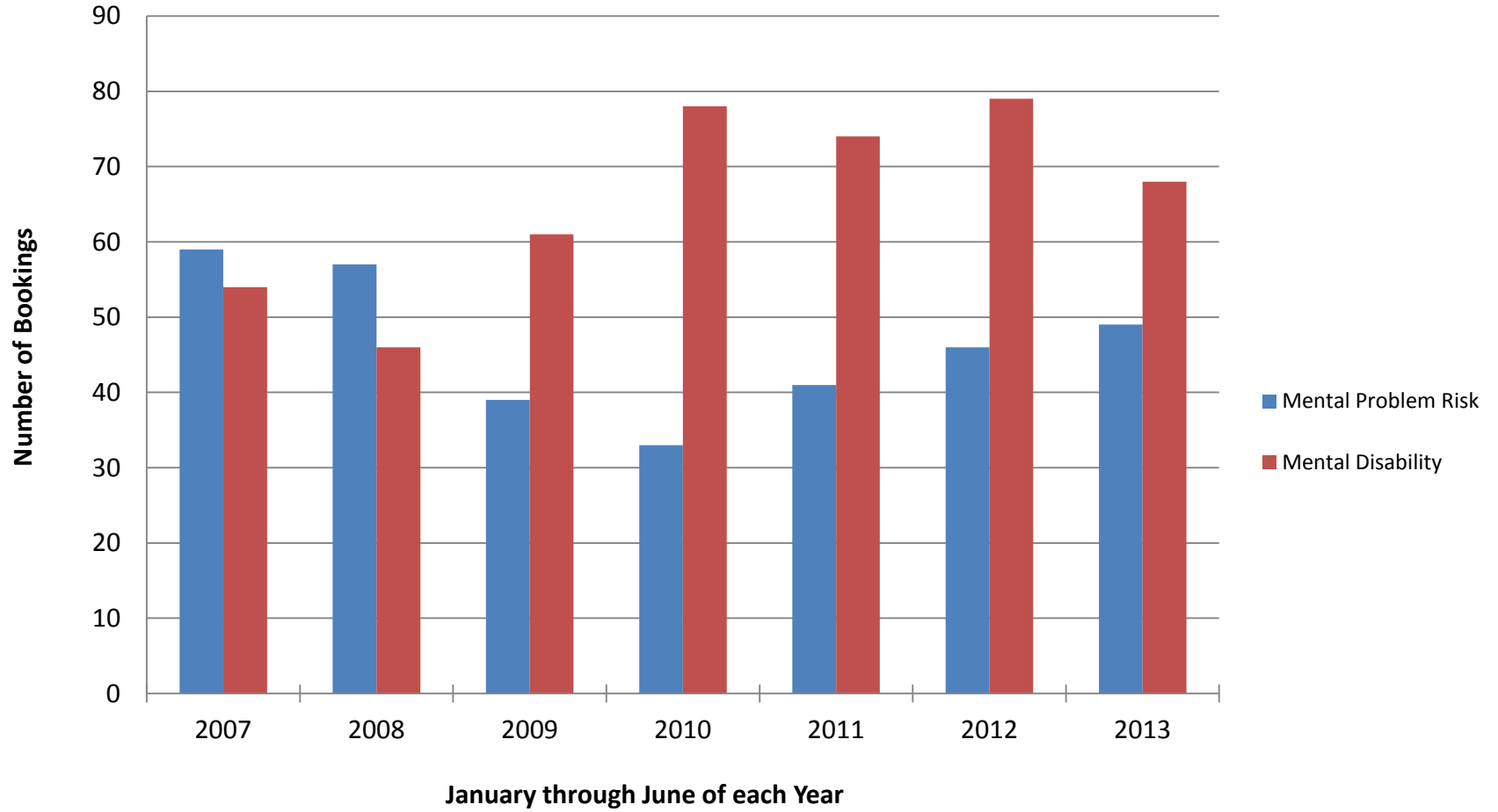
Average Bed Days Used for Lesser Offenses by Quarter, 2011-2013



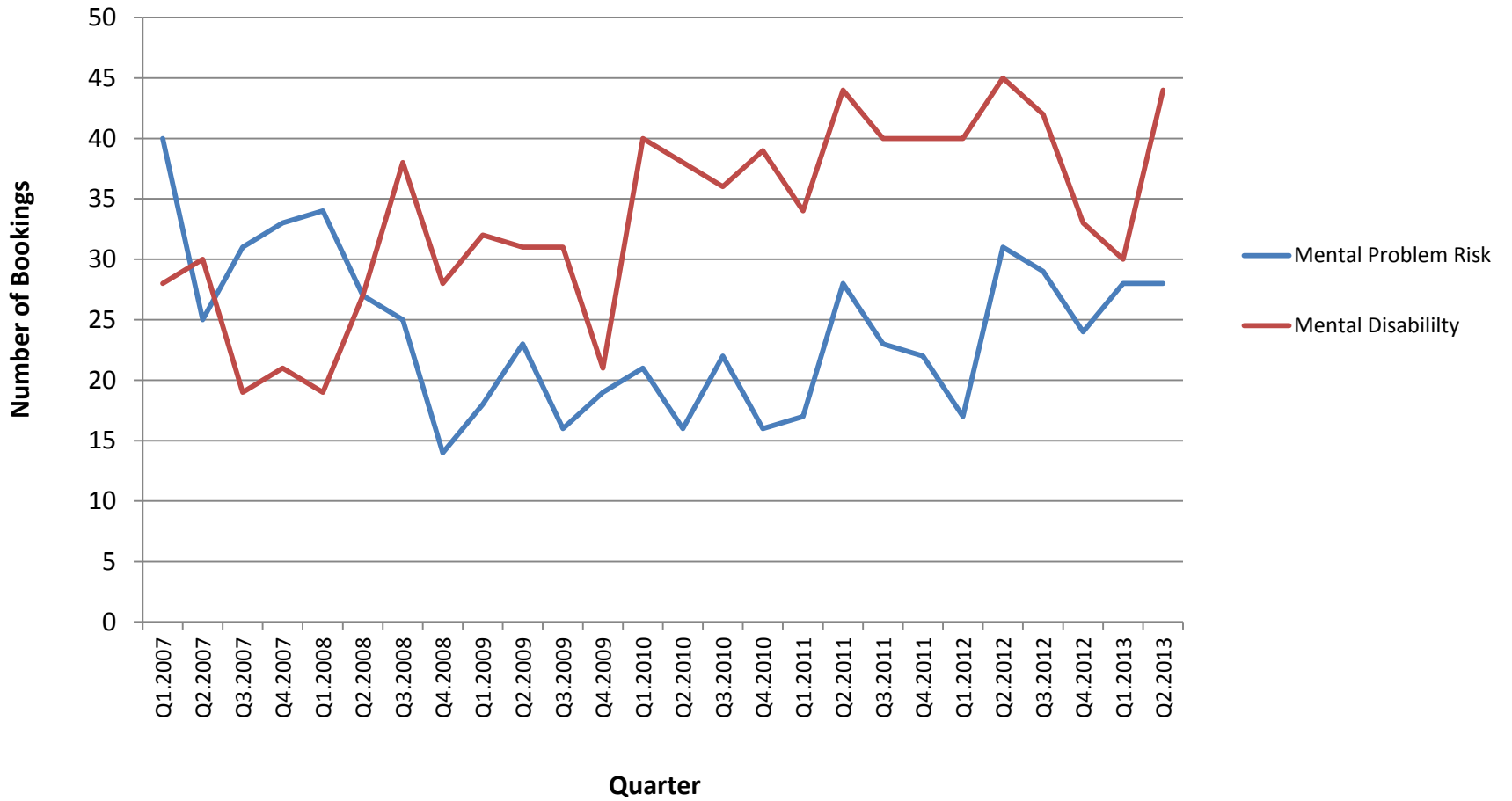
Total Bed Days Used for Lesser Offenses by Quarter, 2011-2013



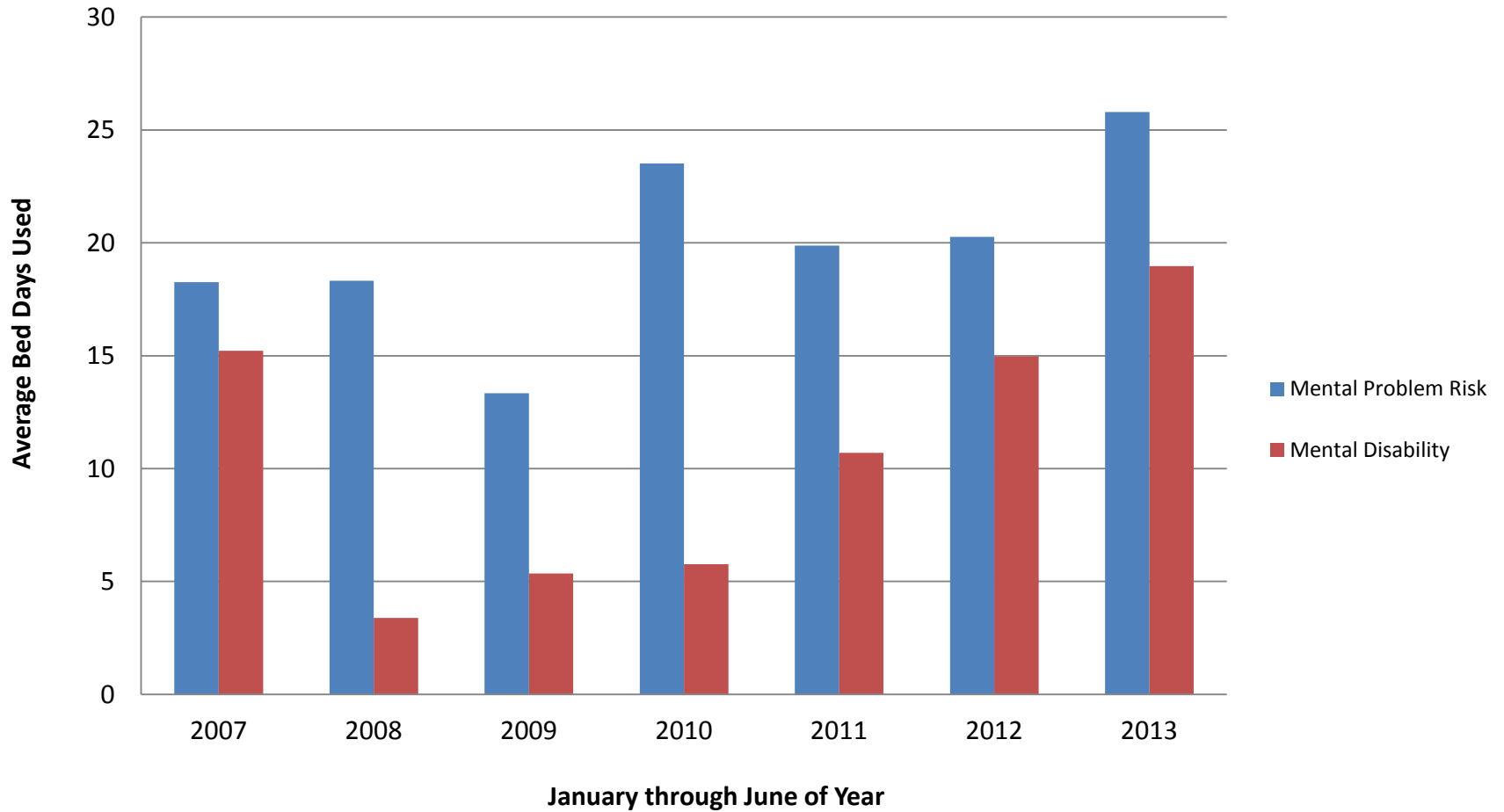
Number of Bookings by Mental Health Labels, January through June of each Year



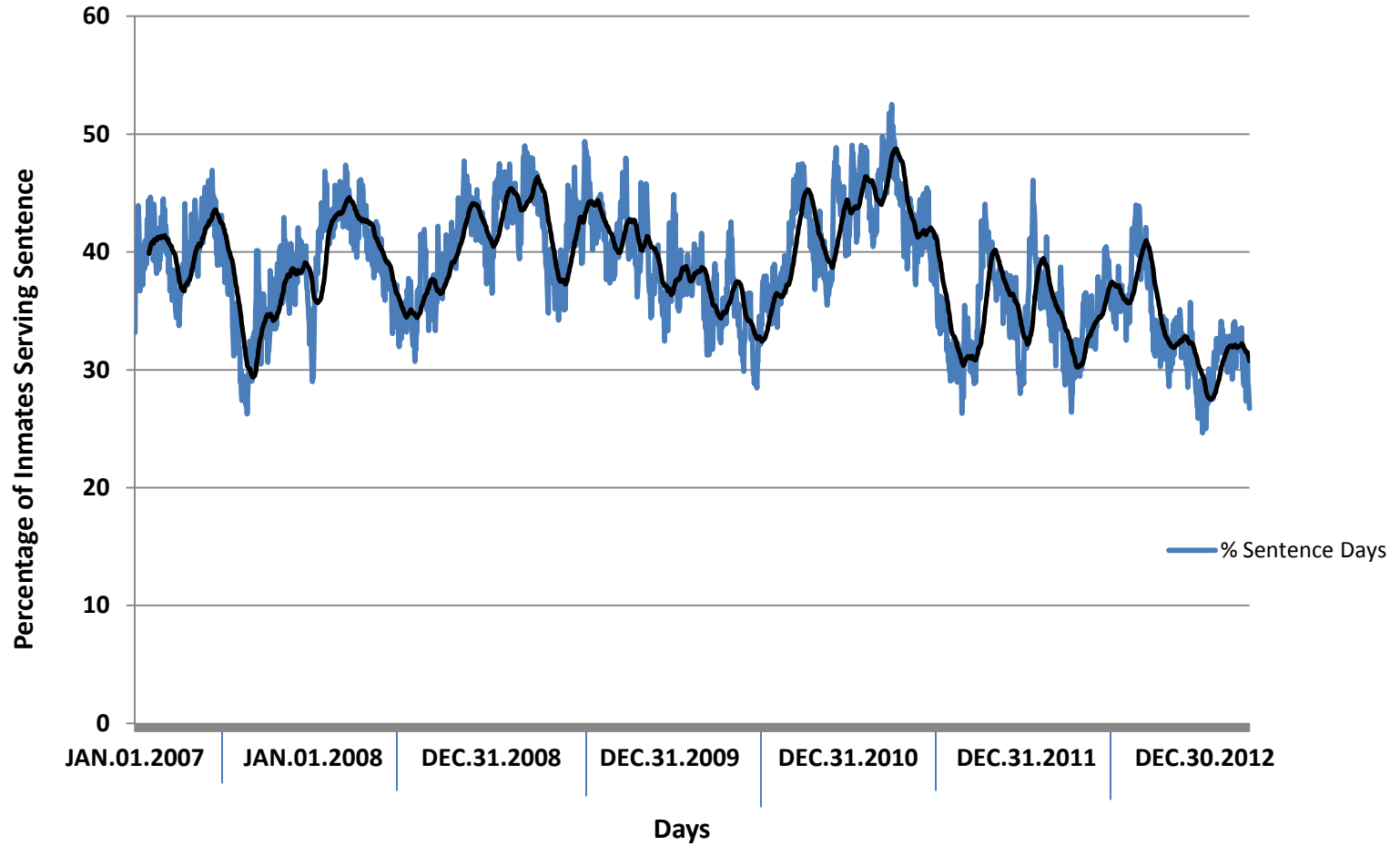
**Number of Bookings by Quarter and Mental Health Labels,
January 2007 through June 2013**



Average Bed Days per Booking and Mental Health Labels, January through June of each Year



Percentage of Inmates Serving Sentences by Day, 2007 through 2012



Thank you!

Questions?