



AGENDA
LAND USE AND DEVELOPMENT COMMITTEE MEETING
Thursday, January 3, 2019, 3:30 P.M.
Room 400, Government Center
115 East Washington Street, Bloomington, IL

1. Call to Order – Chair
2. Consideration of December 6, 2018 minutes
3. Recommendation Concerning Bills and Transfers
4. Appearance by Members of the Public
5. ITEM FOR ACTION:
 - A. Request by Wanda Sutter, for a waiver of preliminary plan requirements and a one-lot subdivision final plat for the WJS Subdivision, File No. S-18-14.
6. ITEMS FOR INFORMATION:
 - A. County “Positions Filled” report from November 27, 2018 to December 26, 2018;
 - B. The next meeting date - 3:30 P.M., February 7, 2019; and
 - C. Other items of information.
7. ADJOURNMENT:

For questions concerning the agenda, please contact the McLean County Department of Building and Zoning at 309-888-5160.

McLean County Department of Building and Zoning

SUBDIVISION STAFF REPORT
LAND USE AND DEVELOPMENT COMMITTEE

CASE NUMBER S-18-14

1. REFERENCE:

- a. Meeting date: January 3, 2019
- b. Subdividers' names: Wanda Sutter
- c. Subdivision name: WJS Subdivision

2. LOCATION AND, LAND USE AND REQUEST:

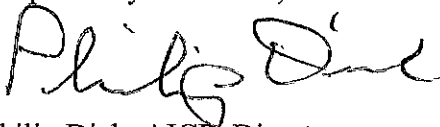
- a. Property location: 25790 Hospelhorn Lane, Hudson, IL 61748.
- b. Township: Hudson Township.
- c. Parcel numbers: 07-05-200-007.
- d. Existing zoning: Agriculture District.
- e. Applicant's requests: A waiver of preliminary plan requirements and approval of a one-lot subdivision final plat for the WJS Subdivision. The property contains an easement of access to the adjacent farm property.
- f. Existing land use: Lot 1 contains a single-family residence and a shed.

3. DIMENSIONS & REVIEW:

- a. Size of Parcel: 10 acres in area.
- b. County Health Department: Recommends approval of the final plat for the WJS Subdivision.
- c. County Highway Department: Recommends approval of the request for a waiver of a preliminary plan and approval of the final plat of the WJS Subdivision. The Hudson Township Road Commissioner will need to sign a plat access certificate for the WJS Subdivision before it can be recorded.

Staff recommends that a waiver of the preliminary plan, and the WJS Subdivision final plat should be approved.

Respectfully submitted,



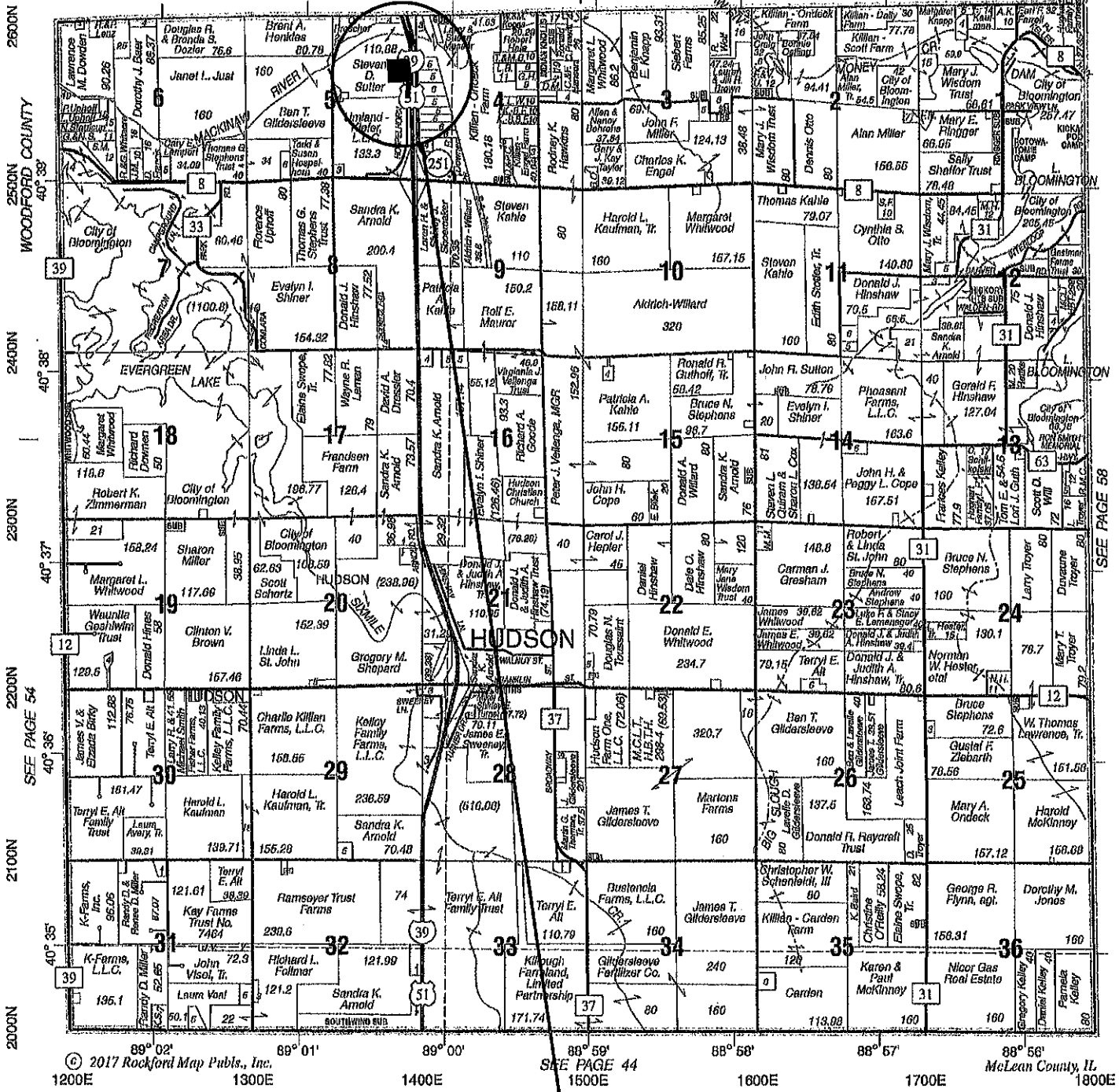
Philip Dick, AICP, Director

HUDSON

T.25N.-R.2E.

WOODFORD COUNTY

SEE PAGE 66



Case S-18-14

WJS Subdivision

WJS SUBDIVISION PART OF THE NE1/4 OF SECTION 5, T26N, R22E, 3P.M. MCLEAN COUNTY, ILLINOIS

SURVEYORS CERTIFICATE

STATE OF ILLINOIS }
COUNTY OF MCLEAN } SS

I, Bradley K. Steffen, Illinois Professional Land Surveyor No. 5416, do hereby certify that the attached plat of subdivision was surveyed and proposed according to the direction in accordance with the laws and usage of the State of Illinois and the laws of McLean County, Illinois, and represents the following described property to wit:

Part of the NE1/4 of Section 5, Township 26 North, Range 22 East of the Third Principal Meridian, McLean County, Illinois, containing 10.01 Acres, more or less, as shown on the attached plat. Said subdivision is to be known as WJS Subdivision, McLean County, Illinois.

I, further certify that the foregoing plat, accompanying this certificate, accurately represents the above described property as subdivided.

I further certify that no portion of said subdivision is located within a special flood hazard area as determined by the Federal Emergency Management Agency and shown on FEMA Number 11182-01-0101, dated July 16, 2008.

I further certify that said subdivision complies with all requirements of a participating subdivision map as approved and adopted by the Illinois State Board of Survey.

I further certify that I have subdivided the same into 1 Lot as shown on the attached plat. Said subdivision is to be known as WJS Subdivision, McLean County, Illinois.

I am not sure I can identify all lot corners as shown on said plat and all corner monuments are given in feet and decimal fractions.

I further certify that the foregoing plat, accompanying this certificate, accurately represents the above described property as subdivided.

I further certify that no portion of said subdivision is located within a special flood hazard area as determined by the Federal Emergency Management Agency and shown on FEMA Number 11182-01-0101, dated July 16, 2008.

I further certify that said subdivision complies with all requirements of a participating subdivision map as approved and adopted by the Illinois State Board of Survey.

I further certify that I have subdivided the same into 1 Lot as shown on the attached plat. Said subdivision is to be known as WJS Subdivision, McLean County, Illinois.

I am not sure I can identify all lot corners as shown on said plat and all corner monuments are given in feet and decimal fractions.

I further certify that the foregoing plat, accompanying this certificate, accurately represents the above described property as subdivided.

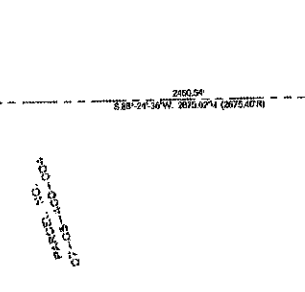
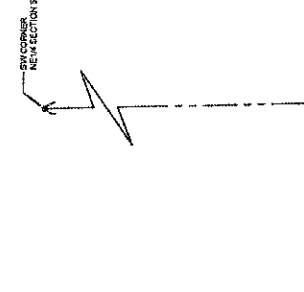
I further certify that no portion of said subdivision is located within a special flood hazard area as determined by the Federal Emergency Management Agency and shown on FEMA Number 11182-01-0101, dated July 16, 2008.

I further certify that said subdivision complies with all requirements of a participating subdivision map as approved and adopted by the Illinois State Board of Survey.

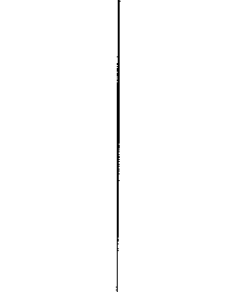
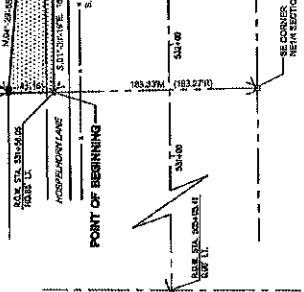
I further certify that I have subdivided the same into 1 Lot as shown on the attached plat. Said subdivision is to be known as WJS Subdivision, McLean County, Illinois.

I am not sure I can identify all lot corners as shown on said plat and all corner monuments are given in feet and decimal fractions.

I further certify that the foregoing plat, accompanying this certificate, accurately represents the above described property as subdivided.



NO.	LENGTH	BEARING	AREA
1	125.23	N 89° 55' 15" W	670.01
2	125.23	N 89° 55' 15" W	670.01
3	125.23	N 89° 55' 15" W	670.01
4	125.23	N 89° 55' 15" W	670.01
5	125.23	N 89° 55' 15" W	670.01
6	125.23	N 89° 55' 15" W	670.01
7	125.23	N 89° 55' 15" W	670.01
8	125.23	N 89° 55' 15" W	670.01
9	125.23	N 89° 55' 15" W	670.01
10	125.23	N 89° 55' 15" W	670.01
11	125.23	N 89° 55' 15" W	670.01
12	125.23	N 89° 55' 15" W	670.01
13	125.23	N 89° 55' 15" W	670.01
14	125.23	N 89° 55' 15" W	670.01
15	125.23	N 89° 55' 15" W	670.01
16	125.23	N 89° 55' 15" W	670.01
17	125.23	N 89° 55' 15" W	670.01
18	125.23	N 89° 55' 15" W	670.01
19	125.23	N 89° 55' 15" W	670.01
20	125.23	N 89° 55' 15" W	670.01
21	125.23	N 89° 55' 15" W	670.01
22	125.23	N 89° 55' 15" W	670.01
23	125.23	N 89° 55' 15" W	670.01
24	125.23	N 89° 55' 15" W	670.01
25	125.23	N 89° 55' 15" W	670.01
26	125.23	N 89° 55' 15" W	670.01
27	125.23	N 89° 55' 15" W	670.01
28	125.23	N 89° 55' 15" W	670.01
29	125.23	N 89° 55' 15" W	670.01
30	125.23	N 89° 55' 15" W	670.01
31	125.23	N 89° 55' 15" W	670.01
32	125.23	N 89° 55' 15" W	670.01
33	125.23	N 89° 55' 15" W	670.01
34	125.23	N 89° 55' 15" W	670.01
35	125.23	N 89° 55' 15" W	670.01
36	125.23	N 89° 55' 15" W	670.01
37	125.23	N 89° 55' 15" W	670.01
38	125.23	N 89° 55' 15" W	670.01
39	125.23	N 89° 55' 15" W	670.01
40	125.23	N 89° 55' 15" W	670.01
41	125.23	N 89° 55' 15" W	670.01
42	125.23	N 89° 55' 15" W	670.01
43	125.23	N 89° 55' 15" W	670.01
44	125.23	N 89° 55' 15" W	670.01
45	125.23	N 89° 55' 15" W	670.01
46	125.23	N 89° 55' 15" W	670.01
47	125.23	N 89° 55' 15" W	670.01
48	125.23	N 89° 55' 15" W	670.01
49	125.23	N 89° 55' 15" W	670.01
50	125.23	N 89° 55' 15" W	670.01



PLAT NO. 07-03-100-00-00
MCLEAN COUNTY, ILLINOIS



McLean County

OFFICE OF THE ADMINISTRATOR

(309) 888-5110 FAX: (309) 888-5111

115 E Washington St, Room 401, Bloomington, IL 61701

December 26, 2018

To: Honorable Members of the Executive Committee, Finance Committee, Land Use and Development Committee, Property Committee, Transportation Committee, Justice Committee, and Health Committee

From: Bill Wasson, County Administrator

Re: Positions filled from November 27, 2018 - December 26, 2018

Department	Oversight Committee	Position	Number of Hires
Circuit Clerk	Justice	Courtroom Clerk	1
Coroner	Justice	Deputy Coroner	3
Court Services	Justice	Veteran's Treatment Court Mentor	1
State's Attorney	Justice	Asst States Attorney II	1
Nursing Home	Health	Registered Nurse	1
Nursing Home	Health	Certified Nursing Assistant	1