

HIGHWAY DEPARTMENT

102 S Towanda Barnes Rd
Bloomington, IL 61705
Office: (309) 663-9445
FAX: (309) 662-8038

Addendum #4

April 23rd, 2020

McLean County Highway Department

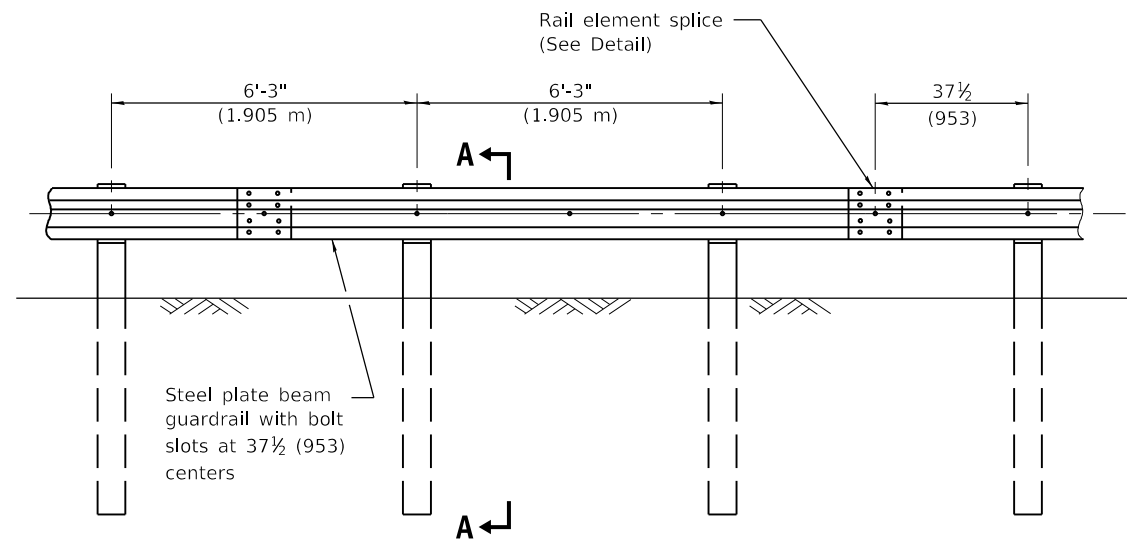
Section: 19-00073-11-BR

Revise the following details or notes within the plans as listed below:

1. On Sheet 2 of 24 “Highway Standards, General Notes & Commitments”, under “Highway Standards”, **delete “B.L.R. 26-3, STEEL PLATE BEAM GUARDRAIL 29” (731 mm) HEIGHT”.**
2. On Sheet 2 of 24 “Highway Standards, General Notes & Commitments”, under “Highway Standards”, **add “630001-12, STEEL PLATE BEAM GUARDRAIL”.**
3. On Sheet 2 of 24 “Highway Standards, General Notes & Commitments”, under “Highway Standards”, **add “630101-10, STRONG POST GUARDRAIL ATTACHED TO CULVERT”.**
4. On Sheet 16 of 24 “Porous Granular Embankment & Culvert Details”, under “CROSS SECTION AT RAIL” detail, **revise** “*Holes to be cast in slab.” **to** “*Holes to be field drilled/cored in slab. Strong post guardrail shall be attached to culvert per IDOT Highway Standard 630101-10, and the cost included in the cost per FOOT of ‘63000001 – Steel Plate Beam Guardrail, Type A, 6 Foot Posts.’”

Attached are the IDOT Standards for notes #2 & #3. These standards will be added to page 2 of 24 within the plans in addition to the specifications packet.

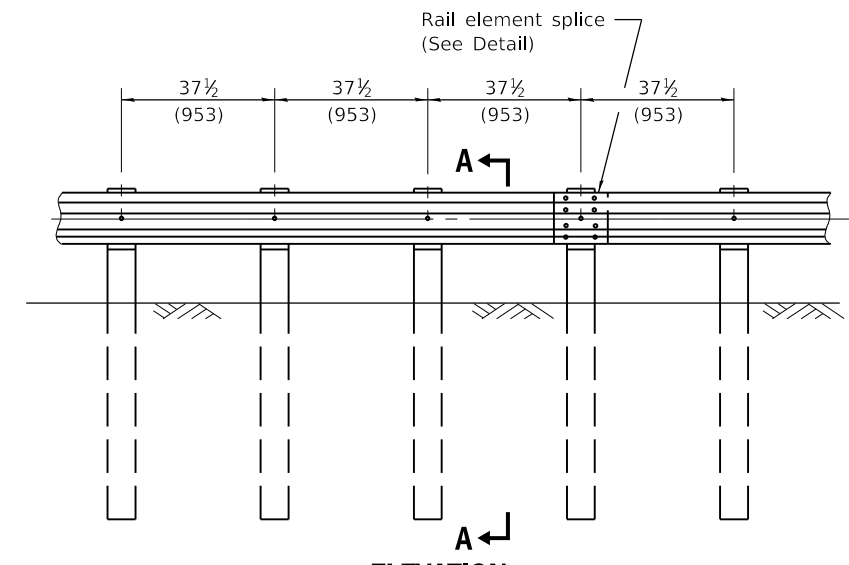
NOTE: Read receipt or email response will confirm addendum received.



ELEVATION

TYPE A

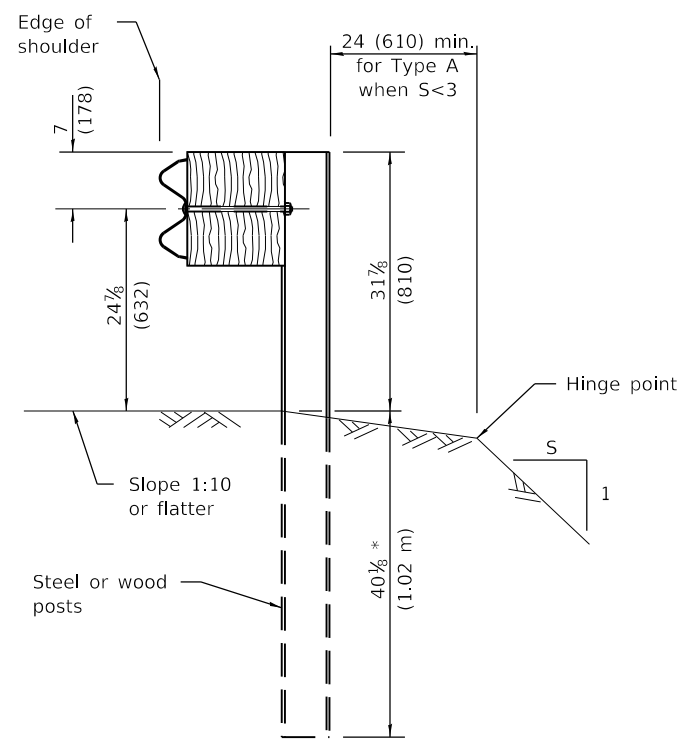
6'-3" (1.905 m) Typical post spacing



ELEVATION

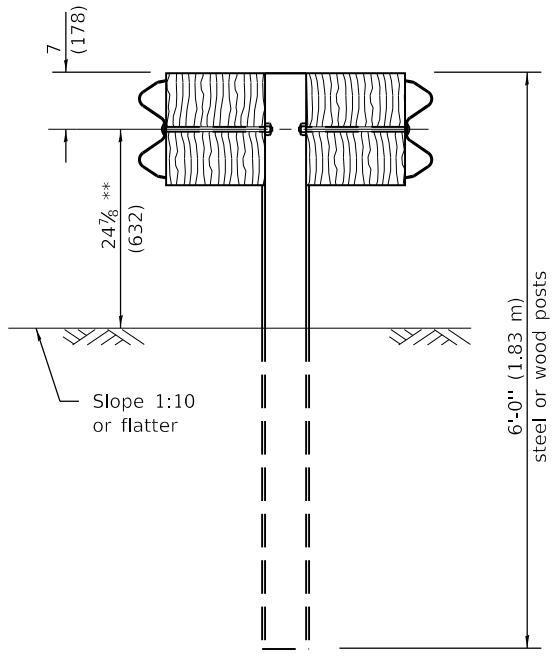
TYPE B

37 1/2 (953) Closed post spacing



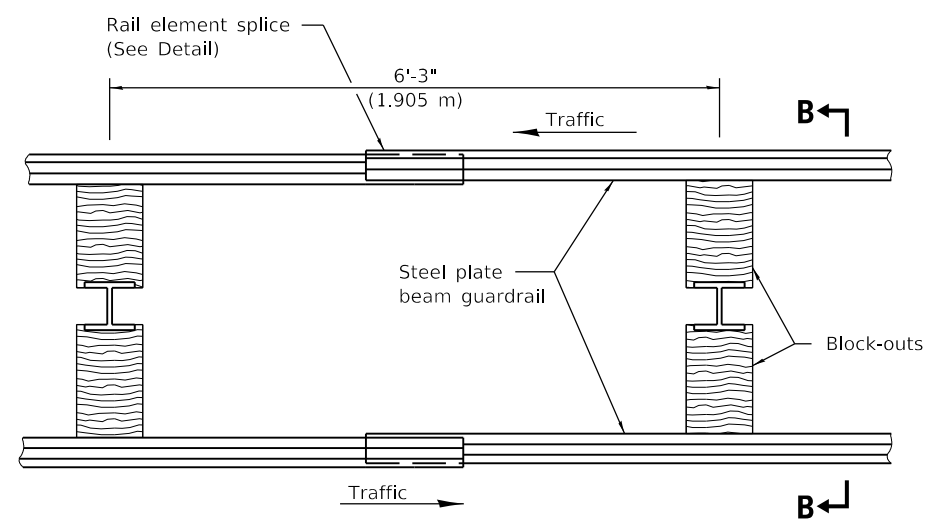
SECTION A-A

* When "S" is less than 3 and the distance from the back of post is less than 24 (610), the post shall be steel and the embedment shall be 76 1/2 (1.93 m) and the minimum top of rail height shall be 31 (787).



SECTION B-B

** When connecting Type D guardrail to an impact attenuator, adjust this dimension to match over a distance of 25'-0" (7.62 m) from point of connection if necessary.



PLAN

TYPE D

Double steel plate beam guardrail
6'-3" (1.905 m) typical post spacing

GENERAL NOTES

All slope ratios are expressed as units of vertical displacement to units of horizontal displacement (V:H).

All dimensions are in inches (millimeters) unless otherwise shown.

Illinois Department of Transportation

APPROVED January 1, 2018
Michael Beard
ENGINEER OF POLICY AND PROCEDURES

APPROVED January 1, 2018
Maureen M. Beck
ENGINEER OF DESIGN AND ENVIRONMENT

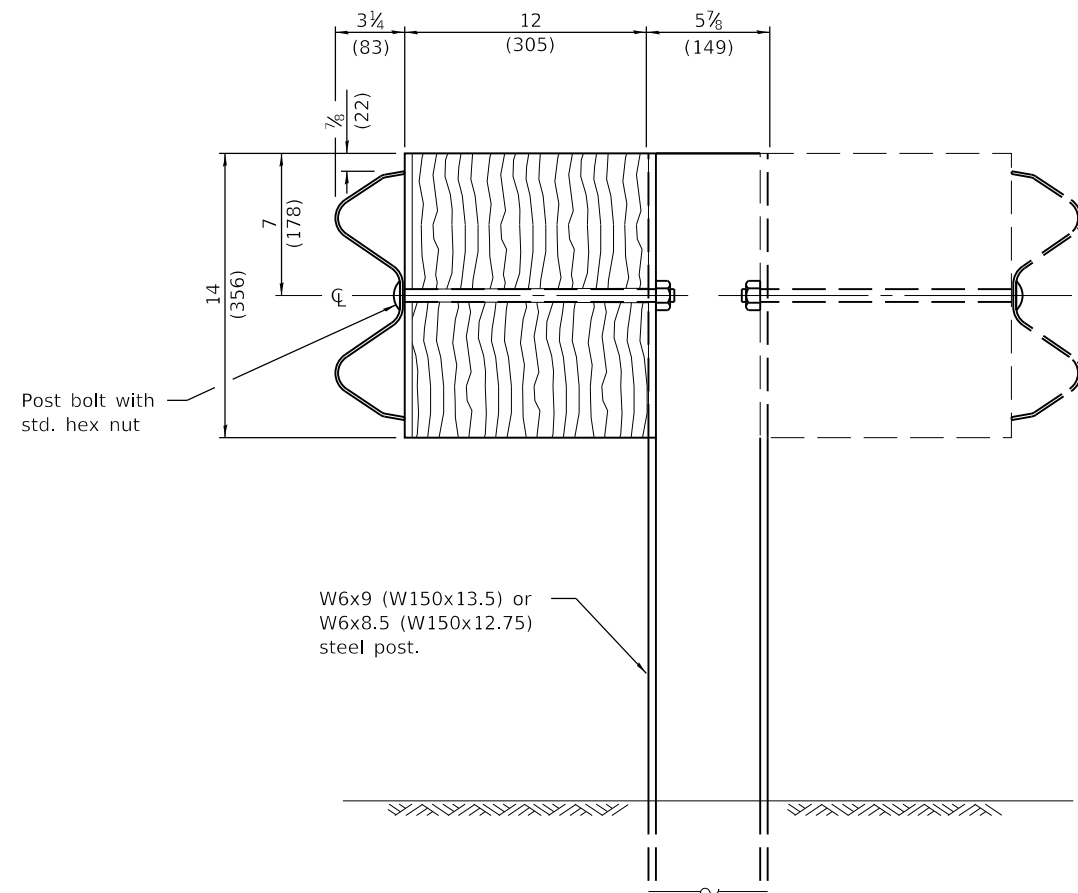
ISSUED 1-1-97

DATE	REVISIONS
1-1-18	Revised steel post to have four holes in each flange.
1-1-17	Added detail for leave-out.
	Rev. 'D' to less than 6 (150) for guardrail behind curb.

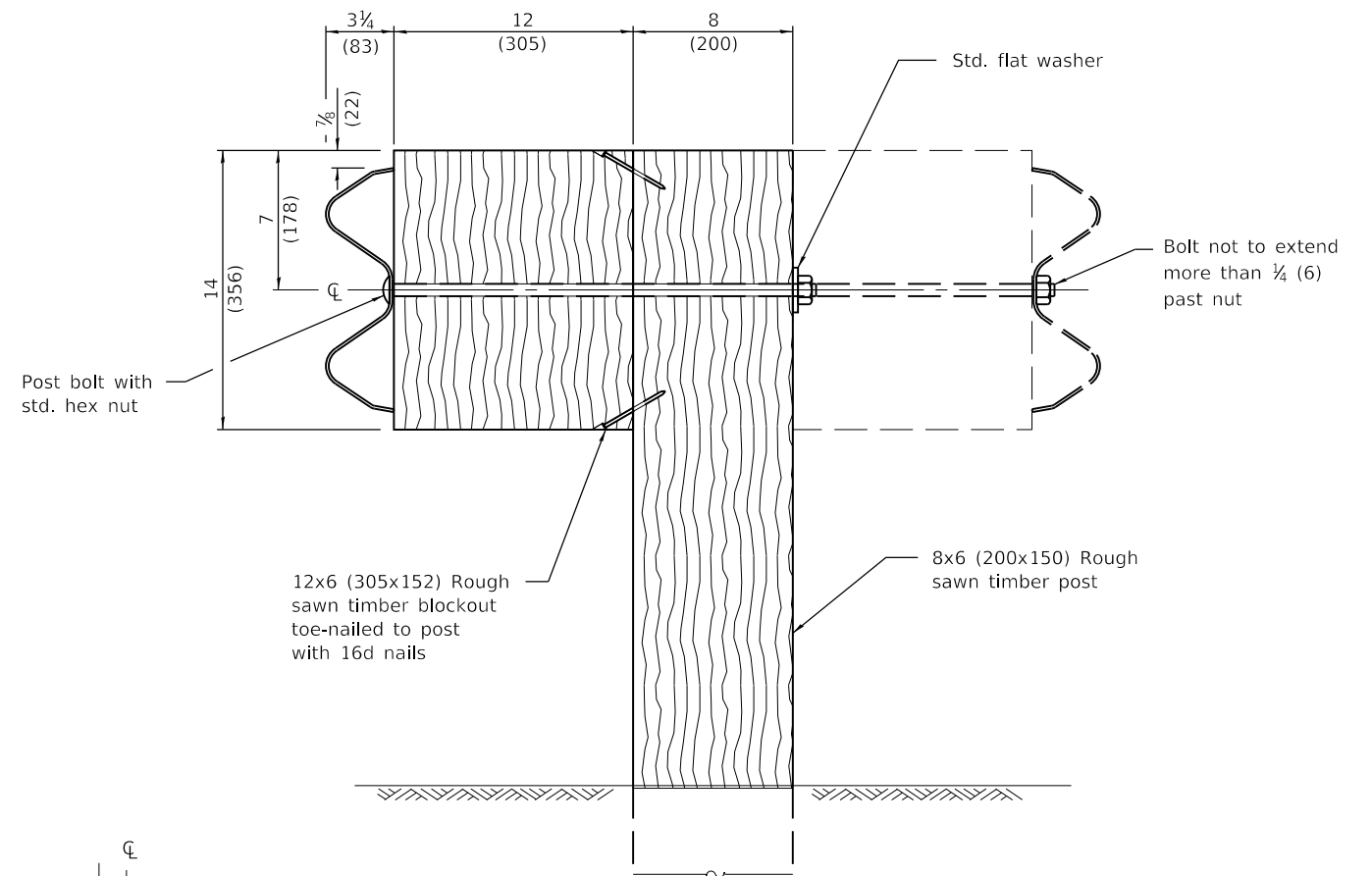
STEEL PLATE BEAM GUARDRAIL

(Sheet 1 of 4)

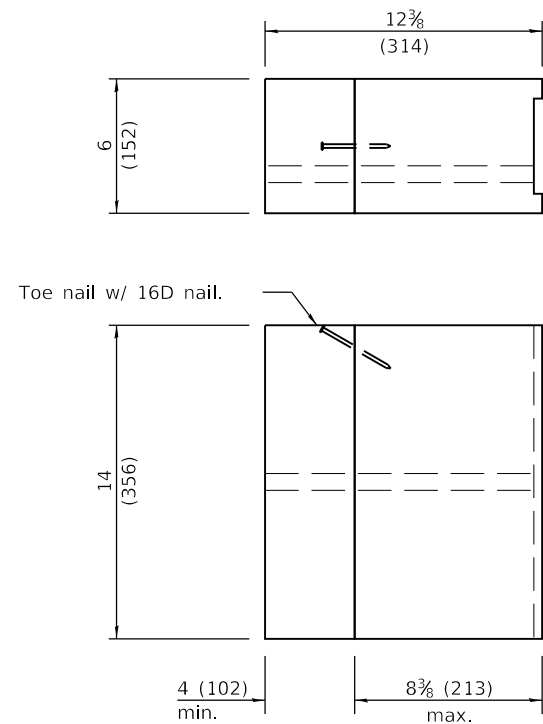
STANDARD 630001-12



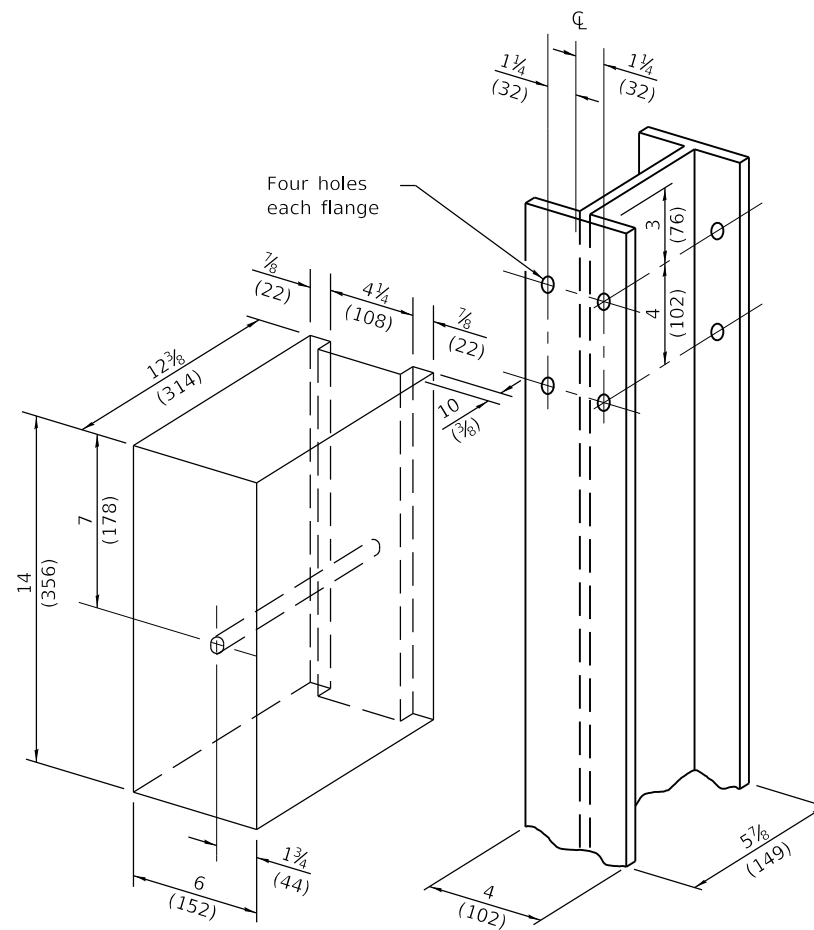
STEEL POST CONSTRUCTION



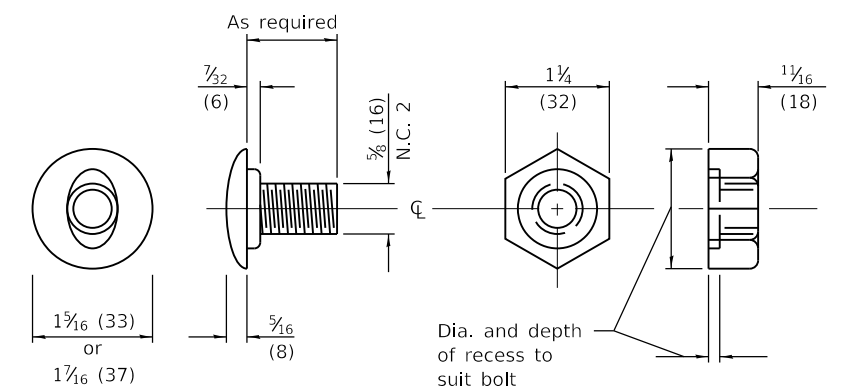
WOOD POST CONSTRUCTION



TWO-PIECE WOOD BLOCKOUT OPTION



WOOD BLOCK-OUT AND STEEL POST DETAILS



POST OR SPLICE BOLT & NUT

Illinois Department of Transportation

APPROVED January 1, 2018
Michael Beard
 ENGINEER OF POLICY AND PROCEDURES

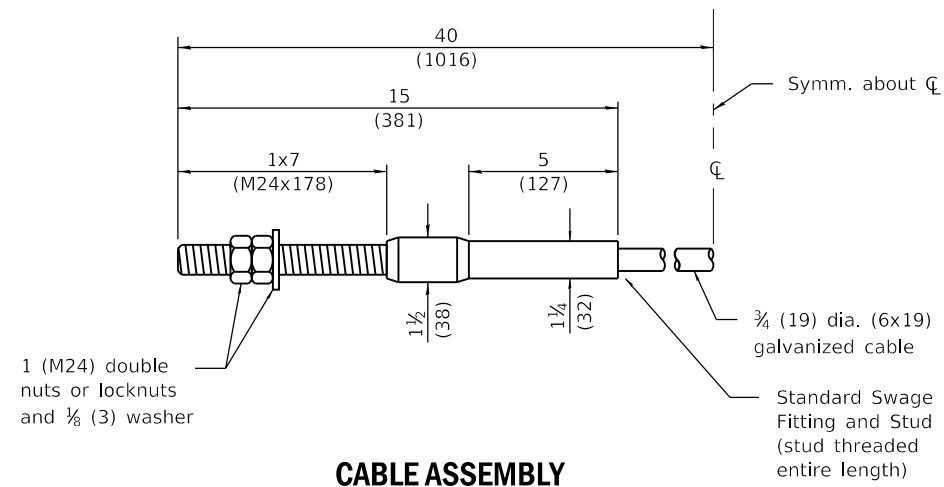
APPROVED January 1, 2018
Marcus M. Beck
 ENGINEER OF DESIGN AND ENVIRONMENT

ISSUED 1-1-18

STEEL PLATE BEAM GUARDRAIL

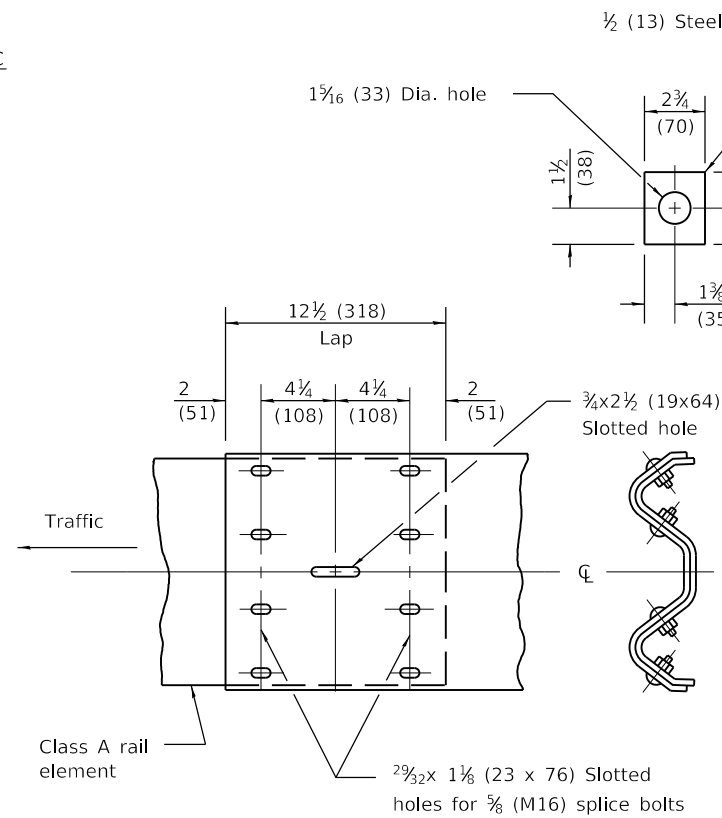
(Sheet 2 of 4)

STANDARD 630001-12



CABLE ASSEMBLY

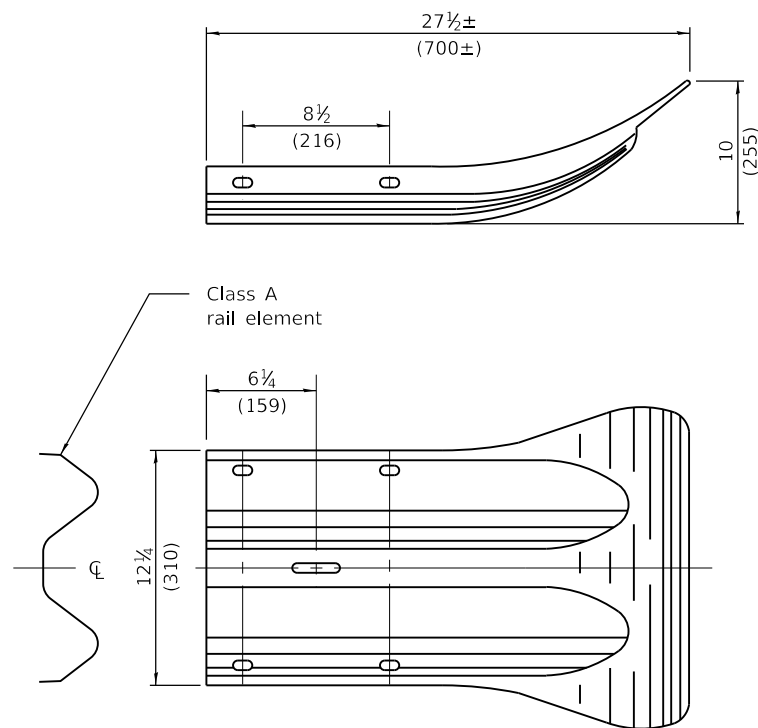
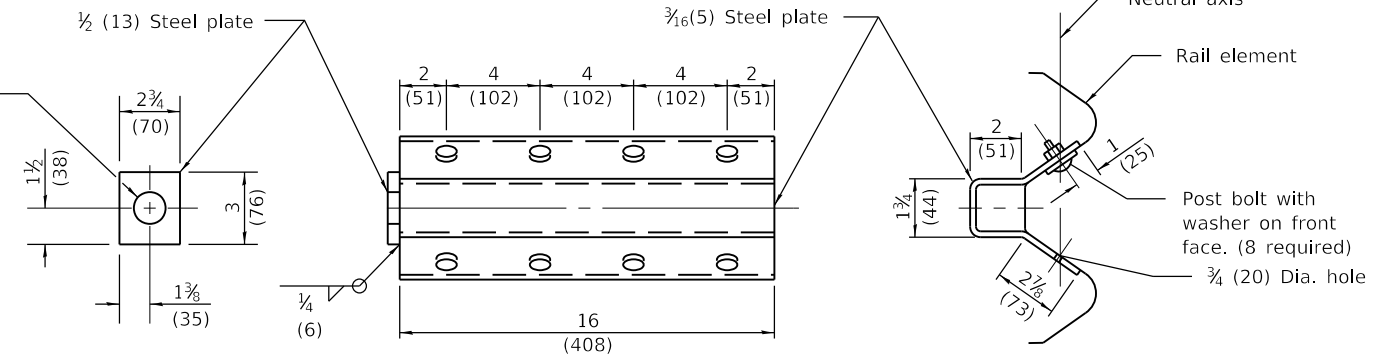
(42,800 lbs. (190 kN) min. breaking strength)
Tighten to taut tension.



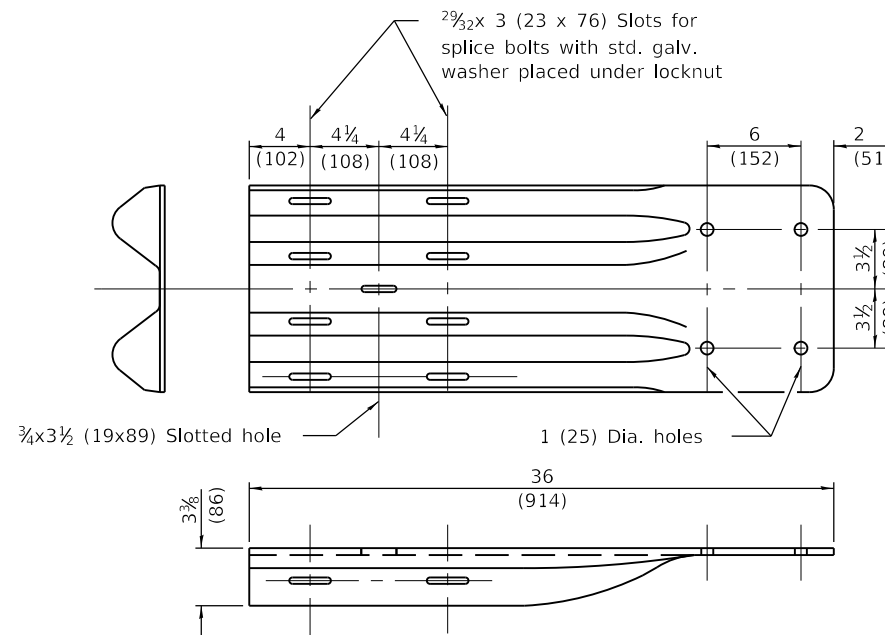
RAIL ELEMENT SPLICE

NOTE
Anchor plate T shall be used to attach cable assembly to guardrail when required on traffic barrier terminals.

ANCHOR PLATE T DETAILS



END SECTION

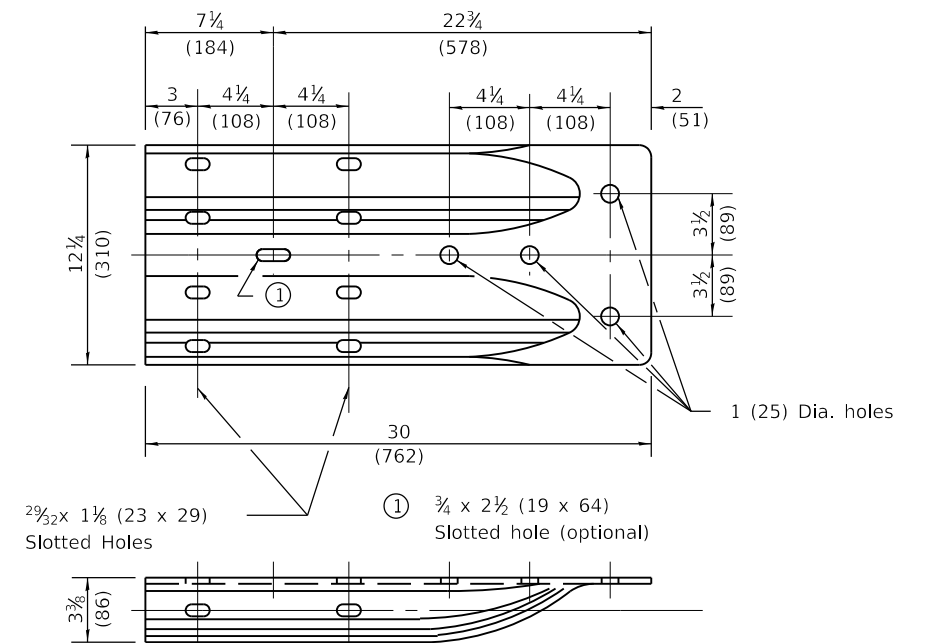


NOTE
When end shoe is attached to a bridge parapet which has an expansion joint, the bolts shall be provided with a locknut or double nut and shall be tightened only to a point that will allow guardrail movement.

The standard end shoe shall be attached to the concrete with pre-drilled or self-drilling anchor bolts. The anchor cone shall be set flush with the surface of the concrete.

Externally threaded studs protruding from the surface of the concrete will not be permitted.

END SHOE



ALTERNATE END SHOE

Illinois Department of Transportation

APPROVED January 1, 2018
Michael Beard
ENGINEER OF POLICY AND PROCEDURES

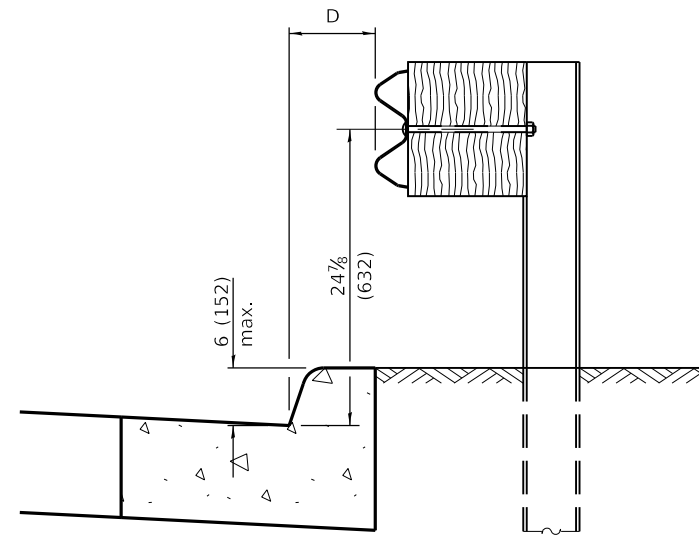
APPROVED January 1, 2018
Marcus M. Beck
ENGINEER OF DESIGN AND ENVIRONMENT

ISSUED 1-1-97

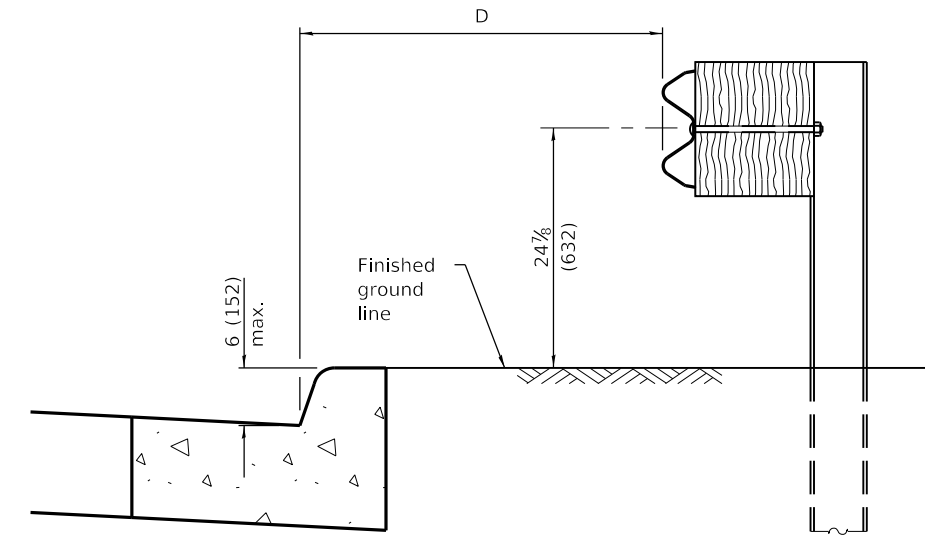
**STEEL PLATE BEAM
GUARDRAIL**

(Sheet 3 of 4)

STANDARD 630001-12



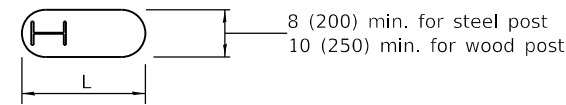
$0 \leq D < 6 (150 \text{ m})$



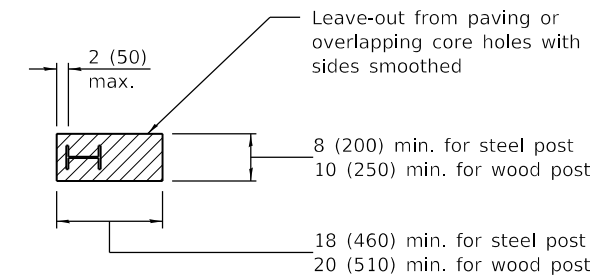
$4'-0'' (1.2 \text{ m}) \leq D \leq 12'-0'' (3.7 \text{ m})$

GUARDRAIL PLACED BEHIND CURB

Note: 'D' shall not exceed 6 (152) for design speeds greater than 45 mph.

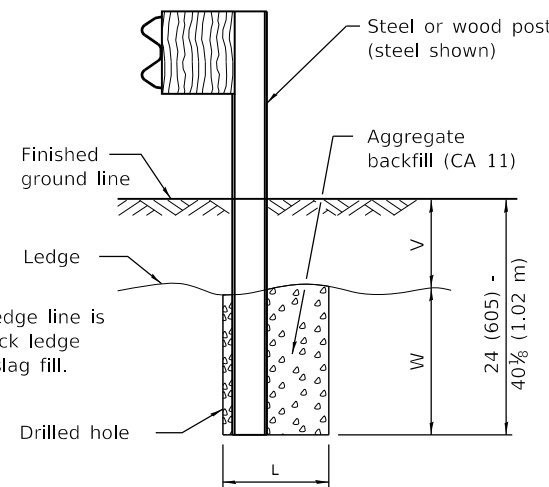


PLAN



PLAN

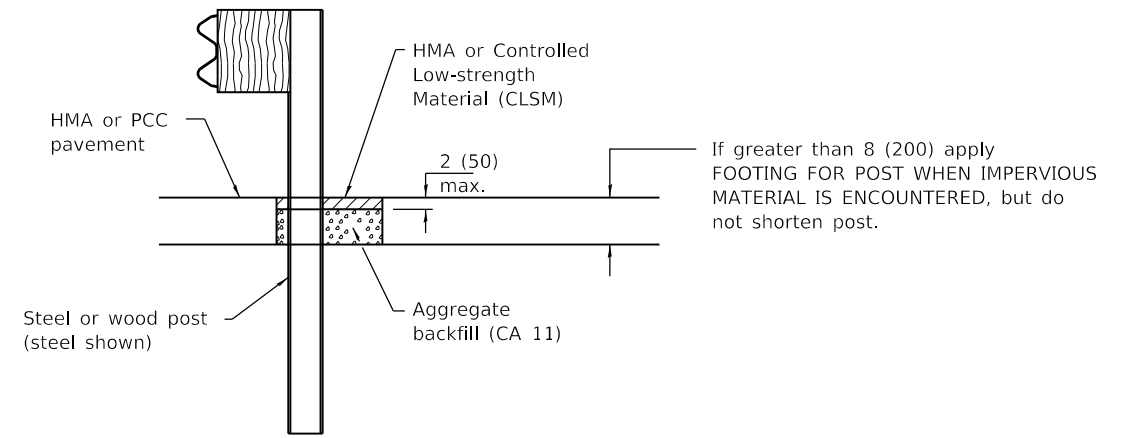
V	W	L	
		Steel Post	Wood Post
0 - 6 (0 - 152)	24 (610)	21 (530)	23 (580)
> 6 - 18 (> 152 - 458)	18 (458)	14½ (368)	16½ (419)
> 18 - 31 (> 458 - 787)	12 (305)	8 (203)	10 (250)
> 31 - 40½ (> 787 - 1.02 m)	12 - 0 (305 - 0)	8 (203)	10 (250)



Note: Ledge line is top of rock ledge or hard slag fill.

ELEVATION

FOOTING FOR POST WHEN IMPERVIOUS MATERIAL IS ENCOUNTERED



ELEVATION

LEAVE-OUT FOR POST WHEN PAVED MATERIAL IS ENCOUNTERED

Illinois Department of Transportation

APPROVED January 1, 2018
Michael Beard
 ENGINEER OF POLICY AND PROCEDURES

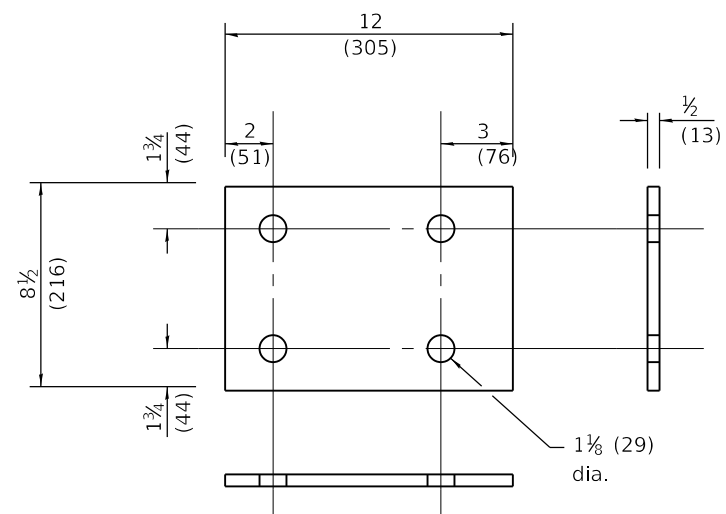
APPROVED January 1, 2018
Marcus M. Beck
 ENGINEER OF DESIGN AND ENVIRONMENT

ISSUED 1-1-97

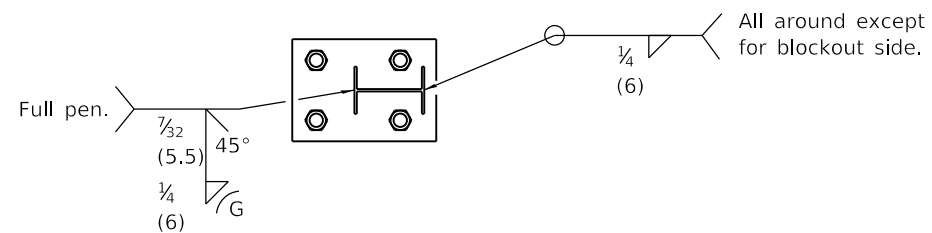
STEEL PLATE BEAM GUARDRAIL

(Sheet 4 of 4)

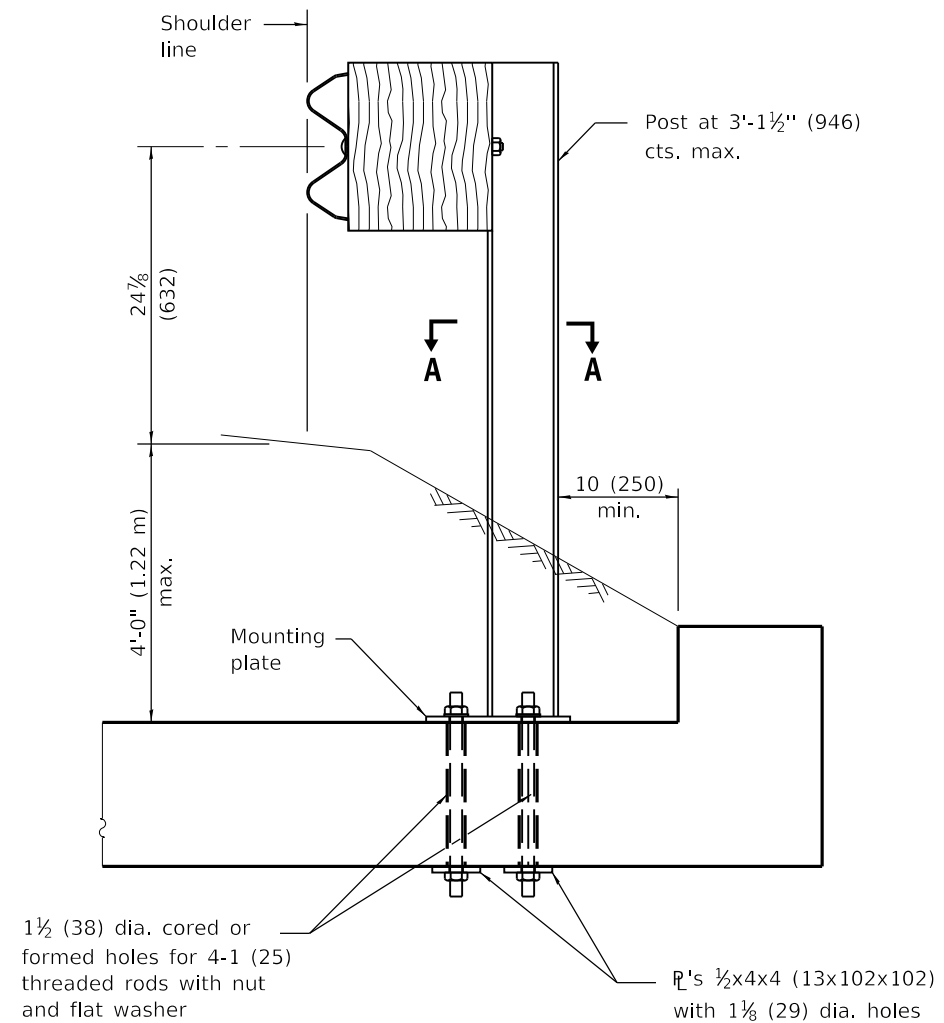
STANDARD 630001-12



MOUNTING PLATE



SECTION A-A



CROSS SECTION

GENERAL NOTES

For details of guardrail elements not shown, see Standard 630001.

All threaded rods shall be installed with heavy hex nuts and standard washers.

All dimensions are in inches (millimeters) unless otherwise shown.

DATE	REVISIONS
1-1-17	Omitted all cases but MNT.
	ON SLAB. Renamed standard.
	Added mounting plate detail.
1-1-11	Revised weld detail
	for Case IV.

**STRONG POST
GUARDRAIL ATTACHED
TO CULVERT**

STANDARD 630101-10

Illinois Department of Transportation

PASSED January 1, 2017
Michael Beard
 ENGINEER OF POLICY AND PROCEDURES

APPROVED January 1, 2017
Marcus M. Beck
 ENGINEER OF DESIGN AND ENVIRONMENT

ISSUED 1-1-97