

MCLEAN COUNTY

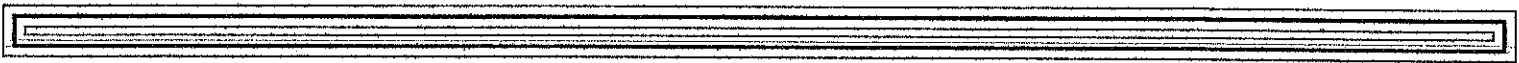
NOTICE OF LETTING

2 New 2021 Dump Body Hoist And Central Hydraulic Systems

- (1) Sealed bids will be received in the office of the McLean County Engineer, 102 South Towanda Barnes Road, Bloomington, Illinois, 61705, until 9:00 A.M. January 26, 2021 for furnishing equipment and at that time publicly opened and read.
- (2) Proposals shall be submitted on the form furnished by the County which may be obtained at the office of The McLean County Engineer, 102 South Towanda Barnes Road, Bloomington, Illinois, 61705 and shall be enclosed in a sealed envelope endorsed "Equipment Bid- Dump Body Central Hydraulic Systems".
- (3) The right is reserved to reject any and all proposals and to waive technicalities.

By order of County Board
 Jerry Stokes
 County Engineer
 McLean County, Illinois

January 11, 2021



PROPOSAL

To: McLean County Highway Department

Address: 102 S. Towanda Barnes Road, Bloomington IL, 61705

The undersigned agrees, if this bid is accepted within 30 days from date of opening, to furnish any or all of the equipment upon which prices are bid, at the respective unit prices.

Bidder _____

By _____

Address _____

MCLEAN COUNTY
SNOW PATROL EQUIPMENT- TANDEM BODY
SPECIFICATIONS FOR 114" CT CHASSIS

1. EQUIPMENT WILL BE BID AS INSTALLED ON (2) PROVIDED KENWORTH T470 CHASSIS
2. ALL EQUIPMENT MUST BE INSTALLED BY AUTHORIZED MANUFACTURER'S DISTRIBUTOR.
3. ONE YEAR LIMITED WARRANTY ON EQUIPMENT, PARTS, AND INSTALLATION WITH A TWO YEAR LIMITED HOIST CYLINDER WARRANTY.
4. ALL COMPONENTS PROVIDED SHALL BE FACTORY NEW, CURRENT MODEL, YEAR AND DESIGN. BIDS MUST MEET OR EXCEED THESE MINIMUM SPECIFICATIONS. LOW BID WILL NOT BE THE DECIDING FACTOR, PRODUCT VALUE AND PERFORMANCE WILL BE THE FIRST CHOICE BY THE COUNTY.
5. MANUFACTURER'S LITERATURE/SPECIFICATIONS MUST BE SUBMITTED WITH YOUR BID. AND, SUPPLY YOUR STANDARD QUOTATION FORMS.
6. YOU MUST FILL IN RIGHT HAND LINES WITH YOUR PRODUCT NAMES, WHERE NOTED. YES, NO OR COMPLY FOR RESPONSE IS REQUIRED ON ALL OTHER LINES. ALL COMPLIES WILL BE UNDERSTOOD AS A VARIATION AND MUST BE NOTED ON A SEPARATE SHEET OF PAPER. BIDDERS THAT DO NOT FOLLOW THESE INSTRUCTIONS WILL AUTOMATICALLY BE DISQUALIFIED FROM THIS BID.
7. INSTALLER MUST HAVE A STOCKING PARTS/SERVICE CENTER LOCATED WITHIN A 100 MILE RADIUS OF COUNTY GARAGE AND CARRY 2 MILLION DOLLAR PRODUCT LIABILITY INSURANCE, PROOF OF INSURANCE MUST BE PROVIDED WITH QUOTE.
8. SUCCESSFUL BIDDER SHALL SUPPLY A LIST OF 2 REFERENCES IN THE PAST 12 MONTHS TO VERIFY EXPERIENCE INSTALLING A MUNICIPAL TYPE DUMP BODY HOIST AND CENTRAL HYDRAULIC SYSTEM AND HYDRAULIC.
9. MCLEAN COUNTY HIGHWAY DEPARTMENT RESERVES THE RIGHT TO REJECT ANY AND ALL BIDS, AND RETAINS THE RIGHT TO WAIVE SPECIFICATIONS AND TECHNICALITIES, AS MAY BE IN THE BEST INTEREST OF MCLEAN COUNTY.

NAME: _____

ADDRESS: _____

CITY, STATE, ZIP: _____

PHONE: _____

DUMP BODY:

- A. 14' FLAT BOTTOM DESIGN-NO CROSS MEMBERS
- B. FOR REFERENCE HENDERSON MODEL MARKE-1-1 XD
WITH CS130-5.5-3 D.A. HOIST
- C. DIMENSIONS:
LENGTH: INSIDE 14'
WIDTH: INSIDE 86"
HEAD HT: 60"
SIDE HT: 44"
GATE HT: 44"

UNDERSTRUCTURE:

- A. LONGBEAMS 1-PIECE, 10", 25LB/FT STRUCTURAL I-BEAM WITH BOX
PLATES AT REAR, PLATES AND LONGBEAMS WELDED 100%
LONGBEAMS TO SIT DIRECTLY ON FRAME, NO FILLER STRIPS
- B. FULL DEPTH 10" STRUCTURAL CHANNEL REAR APRON
- C. FORMED STEEL LONGBEAMS **ARE NOT** ACCEPTABLE!

NO! EXCEPTIONS

BODY SIDES: 201 STAINLESS STEEL

- A. 6"x4"x1/4" STRUCTURAL TUBE TOP RAIL
NO EXCEPTIONS
- B. 10GA. SIDE PANEL WITH SLOPED RUNNING BOARDS
- C. HEAVY-DUTY REAR CORNER POST OF 7GA. EACH SIDE WITH 1/4"
L-SHAPED OVER-LAP PLATES TO REAR APRON
- D. 10GA. SINGLE HORIZONTAL WELDED 100%
- E. BRACES/REINFORCEMENTS CONTINUOUS WELDED
- F. FRONT AND REAR CORNER POSTS MADE OF 7GA.
- G. S.S STEEL GRIP STRUT DOWN BOTH SIDES STOPPING 12" FROM END
- H. S.S GRIP STRUT STEPS (1 ON LEFT FRONT AND 2 INSIDE BED IN FRONT
CORNER. 24" S.S. GRAB HANDLE WELDED TO FRONT LEFT CORNER

BODY HEAD: 201 STAINLESS STEEL

- A. 10GA TWO-PIECE DESIGN WITH OPEN FRONT HOIST WELL
- B. BOXED TOP RAIL REINFORCEMENT
- C. SIDE TO HEAD SEAMS CONTINUOUS WELD INSIDE/OUT
- D. TWO BOXED MID-POINT HORIZONTAL BRACES ON EACH SIDE OF
HOIST WELL
- E. TWO LOAD FRONT TIE DOWN BRACKETS REINFORCED TO TOP RAIL

NO! EXCEPTIONS

BODY FLOOR:

- A. 1-PC. 1/4" AR-400 FLOOR PANEL, 1-PIECE DESIGN
- B. ROUND CORNER PLATE TO SIDE WALLS
- C. WELDED CONTINUOUS TO SIDES, FRONT, REAR, APRON, AND RUB RAIL
- D. A CHAIN BOX WITH 1" HOLE PUNCHED BOTTOM, FORMED OF 7GA. 201
STAINLESS, 30" L X 18" W X 6" TALL FACTORY INSTALLED TO LEFT FRONT
CORNER, FLUSH TO SIDE AND FRONT, 10" OPENING WITHIN A 10" PIECE OF
GRIPSTRUT IN OPENING TO ACT AS A STEP

BODY GATE: 201 STAINLESS STEEL

- A. AIR TRIP "PANKAKE TYPE" RELEASE W/ ELECTRIC OVER AIR SWITCH MOUNTED IN CAB, WIRED TO PEDESTAL CONTROL CENTER SWITCH
- B. 7GA. -1PIECE PANEL
- C. 3 PANEL REINFORCEMENT DESIGN, BOXED PICTURE FRAME W/TWO HORIZONTAL BRACES
- D. 3/8" PROOF COIL STAINLESS SPREADER CHAINS FOR DOUBLE-ACTING USE
- E. 1-1/4" DIAMETER CR1045 LATCH PINS ENCAPSULATED INTO LOWER HORIZONTAL BRACE
- F. MIDDLE AND BOTTOM HORIZONTAL BRACES OF DIRT SHEDDING OR 45 KNEE BRACE TYPE
- G. ALL BRACES AND PANEL SEAMS CONTINUOUS WELD
- H. ADDITIONAL HINGE PLATE W/ 1-1/4" CLEARANCE (PLEASE REFER TO TO FIGURE "A" FOR CONFIGURATION)

DOGHOUSE: 201 STAINLESS STEEL

- A. 7GA FRONT PANEL SHELL, MAX. 12" DEEP INTO BODY
- B. HEAVY-DUTY STRUCTURAL HOIST MOUNTING INTO UNDER-STRUCTURE FOR TRUNNION MOUNT APPLICATION
- C. REINFORCED TO HEAD AND ALL SEAMS CONTINUOUS WELDED

GATE HARDWARE: 201 STAINLESS STEEL

- A. RECESSED OFFSET FLUSH MOUNT HIGH SWING TOP HINGE ARM OF 1" FLAME CUT S.S. STEEL
- B. 1 1/4 S.S PROOF PIVOT PIN THAT REACHES THRU ALL 3 UPPER BLOCKS
- C. 1 1/4" LOWER PIN SEAT REINFORCED TO APRON
- D. HIGH REACH LOWER LATCH HOOK WITH REINFORCED OPENING AND PIVOT PIN
- E. FLAME CUT S.S. STEEL LOWER LATCH LOCK
- F. TWO UPPER BEARING BLOCKS OF 1"
- G. 3/8" REINFORCEMENT PLATE ON UPPER AND LOWER HOOKS
- H. LOWER CHAIN BRACKETS SHALL BE 8-1/2" ABOVE LOWER TAILGATE PIN

HIGH SWING GATE LOCK/RELEASE SYSTEM:

- A. SPRING ASSIST-OVER CENTER LOCK SYSTEM
- B. 1-1/4" DIAMETER CR1045 CROSS SHAFT, 3/4" DIAMETER ROD LINKAGE WITH ADJUSTABLE CLEVIS ENDS AND ADJUSTABLE CROSS-SHAFT STOPS.
- C. STAINLESS STEEL CROSS SHAFT BEARINGS

NO! EXCEPTIONS

CAB GUARD: 201 STAINLESS STEEL

- A. 10 GA. ONE PIECE TRAY WITH HEAVY-DUTY GUSSET END PLATE CAPS
- B. 22" TRAY EXTENSION WITH DOUBLE ROLLED FRONT FLANGE
- C. MOUNTED WITH SUFFICIENT CAB AND EXHAUST PIPE CLEARANCE
- D. WELDED CONTINUOUS TO BODY HEAD

BODY LIGHTS:

- A. AFT CORNER POST SIDES AND 3-LIGHT CLUSTER TO BE LED
- B. AFT CORNER POST REAR FACE: HIGH MOUNTED
(TOP) L.E.D. STOP/TAIL/TURNS
(BOTTOM) LED BACK UP LAMPS
- C. REFLECTORS FRONT AND REAR
- D. CONFORM TO FMVSS 108 STANDARDS
- E. RUBBER SHOCK MOUNTED I.D. AND MARKER LIGHTS
- F. 3-LIGHT CLUSTER MOUNTED ON BOTTOM OF HINGE ANGLE
- G. JUNCTION BOX WITH CLEAR FACE MOUNTED TO COUNTY SPECIFICATIONS
- H. CONNECTION IN JUNCTION BOX AND LAMP PLUG CONNECTIONS COATED W/ELECTRICAL GREASE

LIFT CYLINDER:

- A. TRUNNION MOUNT 3-STAGE TELESCOPIC
- B. BORE SEAL DESIGN
- C. REF. CS-130-5.5-3 CYLINDER DESIGNED FOR TAILGATE SANDERS
- D. STAGES TO BE NITRIDED AND BEARING LUGS
- E. X-WIDE BRONZE PISTON AND GLAND SUPPORTS
- F. U-CUP PISTON SEALS
- G. OSCILLATING TRUNNION COLLAR, MIN. 5-DEGREES
- H. COVER PROTECTION HOUSING
- I. FULL DIAMETER TRUNNION COLLAR WITH NITRIDED BEARING SURFACE
- J. DOULBE ACTING
- K. INVERTED OR STANDARD FRONT MOUNT HOIST ARE NOT ACCEPTABLE

NO EXCEPTIONS

NO! EXCEPTIONS

NO! EXCEPTIONS

NO! EXCEPTIONS

NO! EXCEPTIONS

NO! EXCEPTIONS

NO! EXCEPTIONS

HOIST & CYLINDER MOUNT CHASSIS/BODY:

- A. CONNECTING PIVITS TO HAVE REPLACEABLE GREASABLE OR GREASELESS COMPOSITE BUSHINGS
- B. BODY FLOOR LINE MUST NOT EXCEED 10" ABOVE TRUCK CHASSIS RAIL
- C. GREASEABLE BEARINGS / 2" 303 STAINLESS STEEL PINS
- D. HEAVY-DUTY PEDESTAL HINGES, MINIMUM 2" WIDE
- E. RECESSED STRUCTURAL STEEL HINGE ANGLE INTO CHASSIS RAIL,
6" X 8" X 1/2"

NO! EXCEPTIONS

NO! EXCEPTIONS

SAFETY EQUIPMENT:

- A. TWO BODY PROPS FOR INSPECTION OF EMPTY BODY
- B. (2) SWS #16338 LED STROBE LIGHTS ON OUTSIDE OF CAB BAR
NO EXCEPTIONS, WIRED INTO CHASSIS PROVIDED WIRE
- C. ALUMINUM CAB BAR SHALL BE 1.25"X3"X110"WITH 1.25 SPACER
FULL WIDTH OF CHASSIS ROOF MOUNTS
- D. EACH END OF CAB BAR SHALL HAVE (2) STAINLESS OVAL LIGHT
BOXES MOUNTED UNDER SWS STROBES, ONE FACING FORWARD W/
AMBER LED TURN / MARKER AND ONE FACING REARWARD W/ LED
RED STT, THESE LIGHTS WILL BE WIRED TO JUNCTION BOX IN ADDION
ONE 14/2 WIRE TO BE INSTALLED INTO THE LIGHT HANUS AND LETT 10"
EXTEDING OUT THE RIGHT SIDE OF THE LIGHT BAR RUNNING TO THE
JUNCTION BOX
- E. (2) HELLA PENCIL BEAM LIGHTS MOUNTED IN MIDDLE OF BAR
APPROX. 15" TO 18" FROM CENTER EACH WAY
- F. HELLA LIGHTS WILL BE WIRED INDIVIDUALLY USING 12/2 CABLE
DIRECT TO SWITCH PANEL
- G. A GROUND BUS BAR WILL BE INSTALLED INSIDE CAB BY RIGHT
SEAT, HELLA'S, REAR STROBES AND SPREADER LIGHTS WILL USE THIS

SAFETY EQUIPMENT CONTUED...

- H. LEFT AND RIGHT SIDE REAR CORNER POSTS WIL HAVE 14/2 WIRE CABLE FROM SWITCH PANEL TO REAR W/ 12" EXCESS OF OUTSIDE POST NO LIGHTS OR CONNECTORS REQUIRED
- I. WHELEN #500 STROBE LIGHTS WELDED TO OUTSIDE REAR CORNER POSTS AMBER/WHITE/AMBER SET UP, WIRED DIRECT TO SWITCH PANEL
- J. TOUCH GUARD SWITCH SYSTEM, SWITCHES WILL BE FLUSH MOUNTED IN CENTER DASH PLATE W/ RELAY BOX MOUNTED TO OUTSIDE OF RIGHT SEAT, PWR TO RELAY BOX WILL BE PROTECTED AND HAVE RESET BREAKER IF FACTORY UPFITER SWITHCS ARE AVA OBOLE THEY ARE TO BE USED IN PLACE OF TOUCH GUARD SWITCH SYSTEM
- K. BOTH REAR CORNER POSTS SHALL HAVE TWO OVAL CUTOUTS, HIGH MOUNTED.
- L. TOP BEING STOP-TAIL-TURN LIGHTS AND GROMMETS TO BE NEW LED TYPE, STANDARD 3 PIN CONNECTORS
- M. BOTH LOWER TO CONTAIN NEW LED BACKUP LIGHTS, STANDARD 3 PIN CONNECTORS
- N. BOTH OUTSIDE EDGES OF CORNER POST TO HAVE NEW LED SIDE MARKER LIGHTS, STANDARD 2 PIN CONNECTORS
- O. TWO STEEL BRACKETS FOR 4" ROUND GROMMET MOUNT LIGHTS TO BE WELDED TO BOTTOM LEADING EDGE OF BASE ANGLE, OUT TO FRAME RAILS
- P. TWO NEW 4" ROUND TRUCK-LITE SUPER 44 LED (OR APPROVED EQUAL) INSTALLED IN BRACKETS.
- Q. ONE NEW 3 LIGHT LED CLUSTER MOUNTED AT REAR TOP OF BASE ANGLE, CENTERED BETWEEN FRAME RAILS
- R. FACTORY BACKUP ALARM TO BE REINSTALLED. ALARM TO BE ATTACHED TO BASE ANGLE AT LEFT SIDE FRAME RAIL AND FACING FORWARD.

PREP, PRIMER, PAINT:

- A. DUMP BODY MUST BE PHOSPHATE WASHED
- B. BOTTOM OF BODY, CHASSIS COMPONENTS, AND HOIST WILL BE PAINTED CHASSIS BLACK

BODY AND SAFETY EQUIPMENT WIRING/ELECTRICAL:

- A. ALL BODY WIRING ROUTED THRU CLEAR FACED JUNCTION BOX
- B. ALL EXTERIOR CONNECTIONS HEAT SHRINK WRAPPED OR PACKARD PLUG CONNECTORS
- C. BODY MARKER LAMPS, I.D. LAMPS, STOP-TAIL-TURN LAMPS AND BACK-UP LAMPS MUST BE CONNECTED TO O.E.M. CHASSIS SUPPLIED BODY BUILDERS WIRING HARNESS INTO JUNCTION BOX.
- D. WIRING SECURED THRU PLASTIC CONDUIT, RUBBER GROMMETS AND GALVANIZED STEEL CONDUIT
- E. DRIVE ON WIRE CLIPS & BUTT CONNECTORS ARE NOT ACCEPTABLE

NO EXCEPTIONS

ACCESSORIES:

- A. BLACK POLY QUARTER FENDERS INSTALLED FORWARD OF TANDEMS
- B. FULL LENGTH ANTI-SAIL MUD FLAPS TO BE INSTALLED REAR OF TANDEMS. REAR MUD FLAPS TO BE MOUNTED TO ¼" X 1-1/4" ANGLE IRON WITH "T" BAR TOP AND WELDED TO FRAME. MUD FLAPS MOUNTED TO FRONT SIDE OF MOUNTING BRACKETS
- C. A LICENSE PLATE MOUNTING PLATE AND LICENSE PLATE LIGHT SHALL BE MOUNTED TO REAR SIDE OF RIGHT REAR MUD FLAP BRACKET.
- D. RED/SILVER NHTSA CONSPICUITY TAPE ASTM D4956-93B
 - 1. EACH SIDE OF BODY, FULL LENGTH ON RUB RAIL
 - 2. FULL WIDTH ON TOP HORIZONTAL TAILGATE BRACE AND THIRD HORIZONTAL BRACE

ADDITIONAL EQUIPMENT:

- A. NEW COUGAR DC3200 OR APPROVED EQUAL VIBRATOR SHALL BE INSTALLED IN THE PROPER LOCATION BETWEEN FRAME RAILS.
- B. VIBRATOR SHALL BE WIRED TO HOIST STICK MOUNTED PUSH BUTTON SWITCH.
- C. THE BED INSTALLATION COMPANY IS TO COMPLETE FACTORY INSTALLED TRAILER PACKAGE INCLUDING GLAD HANDS. THE GLAD HANDS BULK HEADS AND TRAILER WIRING PLUG TO BE MOUNTED TO ¼" X 7" X 10" WIDE STEEL PLATE AND WELDED TO THE BOTTOM OF BED HINGE BASE ANGLE FORWARD EDGE, CENTERED BETWEEN THE STOP-TAIL-TURN LIGHTS
- D. SUCCESSFUL BIDDER TO PROVIDE A WIRING SCHEMATIC OF ALL INSTALLED COMPONENTS

CENTRAL HYDRAULIC SYSTEM:

- A. THE PUMP SHALL BE A SEVERE DUTY, DIRECT MOUNT, HOT SHIFT PTO WITH A MINIMUM 25 GPM RATING.
- B. THE HYDRAULIC RESERVOIR/VALVE LOCKER SHALL BE MOUNTED IN A FASHION THAT WILL NOT INTERFERE WITH A MAIL HOT CRADLE FOR THE DUMP BED BEING INSTALLED AT A LATER DATE. ALL LIDS/COVERS SHALL BE REMOVABLE WITH HOIST CRADLE IN PLACE.
- C. THE HYDRAULIC RESERVOIR SHALL HAVE A MINIMUM 30 GALLON CAP.
- D. DRIVER SIDE MOUNTED TO FRAME OF THE TRUCK
- E. RESERVOIR IS TO BE CONSTRUCTED OF MINIMUM 10 GAUGE STEEL
- F. RESERVOIR TO BE POWDER COATED BLACK
- G. MOUNTING BRACKETS TO BE CONSTRUCTED OF 3/16" THICK ANGLE IRON
- H. THE TANK IS TO BE INTERNALLY BAFFLED WITH RETURN FLOW DEFLECTION PLATES.
- I. A 2.00" NPT SUCTION PORT SHALL BE PROVIDED AT THE REAR OF THE TANK FOR PROPER SUCTION LINE CONNECTION.
- J. RESERVOIR TO HAVE 2.00" NPT PORTS ON BOTH SIDES OF TANK
- K. RESERVOIR SHALL HAVE A ¾" NPT RETURN PORT AT THE REAR OF THE TANK
- L. SUCTION STRAINER 100 MESH SCREEN TYPE FILTER WITH A 3 PSI BY-PASS
- M. BASKET TYPE FILLER/BREATHER CAP
- N. EXTERNALLY MOUNTED OIL LEVEL SIGHT AND TEMPERATURE GAUGE
- O. IN TANK RETURN FILTER WITH A 25 PSI BY-PASS, 10 MICRON ELEMENT
- P. FILTER INDICATOR GAUGE
- Q. FILTER BYPASS SENSOR WIRED TO ELECTRONIC SPREADER CONTROL INPUT
- R. 2" FULL FLOW BALL VALVE IN SUCTION PORT
- S. LOW OIL WARNING SENSOR ATTACHED TO ELECTRONIC SPREADER CONTROL INPUT

CENTRAL HYDRAULIC SYSTEM CONTUED...

- T. LEFT REAR BED CORNER POST SHALL HAVE A HOLE CUT IN THE FORWARD FACING LOWER FLAT BETWEEN BODY REINFORCEMENTS. HOLE SHALL BE 8 1/2" ABOVE LOWER TAILGATE PIN.
- U. RIGHT REAR CORNER POST FORWARD FACING FLATS SHALL BOTH HAVE 2-1/2" X 5-1/2" RECTANGLE HOLES CUT, S.S. BOLT ON COVER PLATES WILL BE INSTALLED W/ (2) 8MJ-8MJ BULKHEAD FITTINGS
- V. BOTH LONG BEAMS SHALL HAVE REAR OPENINGS ENLARGED TO ACCOMMODATE 5" X 3/16" WALL STEEL TUBING. TUBING SHALL BE CUT TO MATCH ANGLES OF BED REINFORCEMENT AND 100% WELDED INTO THE ENLARGED OPENINGS IN REAR OF LONG BEAMS

HIGH PRESSURE FILTER:

- A. A HIGH PRESSURE FILTER WITH 10 MICRON FILTER ELEMENT, DOUBLE LENGTH, AND #16 PORTS TO BE IN THE PRESSURE LINE BETWEEN THE PUMP AND VALVE ASSEMBLY AND SECURELY FASTENED TO THE INSIDE OF THE TRUCK FRAME RAIL (AS PER MANUFACTURE SPECIFICTION)

ELECTRONIC SPREADER CONTROL VALVE AND TOWER STAND:

- A. SPREADER/AUGER VALVES AND HYDRAULIC PRE-WET SYSTEM TO BE ELECTRONIC, CLOSED LOOP, GROUND SPEED INTERFACE CONTROL PANEL WITH TWO CONTROL KNOBS FOR OPERATION OF AUGER AND SPINNER MOTORS, AND CONTROL OF HYDRAULIC PRE-WET SYSTEM. FORCE AMERICA 5100EX OR PRE-APPROVED EQUAL.
- B. FORCE AMERICA FB-128 AUGER FEEDBACK SENSOR KIT OR APPROVED EQUAL TO BE INCLUDED IN BID AND DELIVERED, BUT NOT INSTALLED BY VENDOR.
- C. THE CABLE SHALL BE INSTALLED AND RAN FROM THE CONTOLER IN THE CAB TO THE LEFT REAR OF BED USING THE CABLE BULK HEAD SUPLYED IN THE SENSOR KIT.
- D. CONTROL PANEL SHALL BE CAPABLE OF AUTOMATIC, MANUAL AND BLAST FUNCTIONS.
- E. TOWER STAND TO BE USED WITH JOYSTICK CONTROL FOR PLOW LIFT AND SWIVEL.
- F. STICK, WITH PUSH BUTTON FOR VIBRATOR, TO CONTROL BED RAISE AND LOWER.
- G. JOYSTICK CONTROL FOR OPERATION OF TRUCK MOUNTED HYDRAULIC WING

VALVE BANK:

- A. 5-SPOOL VALVE BANK WITH ADJUSTABLE FLOW CONTROL
- B. HOIST SECTION RATED FOR 40 GPM
- C. PLOW LIFT, PLOW SWIVEL, WING HEEL AND WING TOE SECTIONS RATED FOR 20 GPM
- D. CABLE OPERATED HOIST, PLOW AND WING SECTIONS
- E. AUGER ELECTRONIC SECTION RATED FOR 14 GPM
- F. SPINNER ELECTRONIC SECTION RATED FOR 7 GPM
- G. PREWET ELECTRONIC SECTION RATED FOR 7 GPM
- H. ALL VELVES LOCKET MOUNTED

HYDRAULIC HOSES:

- A. ALL HYDRAULIC HOSES AND FITTINGS TO BE INSTALLED AND PROPERLY ROUTED TO THE FRONT AND REAR OF TRUCK AS OUTLINED. ALL PRESSURE HOSES, WITH THE FOLLOWING MINIMUM RATINGS:
 - A. 3/8" HOSE RATED FOR 4000 PSI
 - B. 1/2" HOSE RATED FOR 3500 PSI
 - C. 3/4" HOSE RATED FOR 2250 PSI
 - D. 1" HOSE RATED FOR 2000 PSI
 - E. 1-1/4" HOSE RATED FOR 1625 PSI
- B. HOSES WILL BE PROPELY SECURED TO SUPPORT BRACKETS AND ROUTED CLEAR OF ELECTRICAL WIRING AND SHARP EDGES.
- C. HOSES TO THE LEFT FRONT FOR PLOW SWIVEL TO BE 1/2" TIED UP, CAPPED AND LABELED. HOSES MUST REACH LEFT FRONT BUMPER OPENING WHEN PROPERLY ROUTED.
- D. HOSE FOR PLOW LIFT TO BE 1/2" AND EXTEND 18" AHEAD OF FRAME RAIL WHEN PROPERLY ROUTED. HOSE TO BE TIED UP, CAPPED AND LABELED.
- E. HOSES TO RIGHT FRONT WING TO BE 1/2" AND ALL 4 CIRCUITS EXTEND 30" AHEAD OF THE FRAME RAIL TIED UP, CAPPED AND LABELED
- F. A 3/4" SOLID STEEL BAR SHALL BE WELDED TO TOP OF CROSS MEMBERS 6 INCHES IN FROM RIGHT SIDE FRAME RAIL. ALL REAR HOSES ROUTED OVER THE TOP OF CROSS MEMBERS SECURED TO THE 3/4" SOLID BAR.
- G. HOSES TO REAR:
 - A. 3/4" FOR AUGER
 - B. 1/2" FOR SPREADER
 - C. 1/2" FOR HYDRAULIC PREWET
 - D. 1" FOR RETURN
- H. ALL HOSES TO REAR WILL BE PLUMBED TO J.I.C. UNION BULKHEADS MOUNTED IN 1/4" X 2" X 2" X 12" ANGLE IRON. BULKHEADS EVENLY SPACED AND SIZED FOR HOSES TO REAR. ANGLE IRON MOUNTED TO RIGHT REAR EDGE OF TANDEM CROSS MEMBER. BULKHEADS WILL BE CAPPED.
- I. SUCTION LINE TANK TO PUMP TO BE 2"
- J. PRESSURE LINE PUMP TO VALVE STACK TO BE 1"
- K. RETURN LINE FROM CONTROL VALVE 1-1/4"
- L. LOAD SENSE LINES TO BE 3/8"

PRE WET EQUIPMENT:

- A. HYDRAULIC DRIVEN PRE WET CONTROL SYSTEM THAT IS COMPATIBLE WITH ABOVE LISTED HYDRAULIC SYSTEM SHALL BE INSTALLED. THE BIDDER IS RESPONSIBLE TO INCLUDE ALL NECESSARY COMPONENTS AND CHANGES REQUIRED WITHIN THE HYDRAULIC CONTROL VALVE ASSEMBLY AND TO THE ELECTRONIC SPREADER CONTROLS IN THE TOWER. HYDRAULIC MOTOR AND PUMP ASSEMBLY WITH SMALL ENCLOSURE TO BE SUPPLIED BUT NOT MOUNTED.

A REPRESENTATIVE OF THE HYDRAULIC COMPANY SHALL BE AVAILABLE TO ASSIST IN TOTAL SYSTEM CALIBRATION ONCE ALL ADD ON EQUIPMENT HAS BEEN INSTALLED BY MCLEAN COUNTY HIGHWAY DEPARTMENT.

NO! EXCEPTIONS
NO! EXCEPTIONS
NO! EXCEPTIONS

MANUALS:

A. SERVICE, PARTS & OPERATORS MANUAL FOR DUMP BODY, PLOW AND HYDRAULICS.

B. ALL MANUALS MUST BE INCLUDED AT TIME OF DELIVERY

WARRANTY:

A. ALL FACTORY AND DISTRIBUTOR GUARANTEES SHALL BE IN WRITING AND ACCOMPAN

Penalties:

The awarded bidder shall have 6 weeks from the receipt date of new cab and chassis(s) to complete the dump bodies and hoists and hydraulics installation packages. A penalty of \$250.00 per week will be assessed and deducted from payment for late completion.

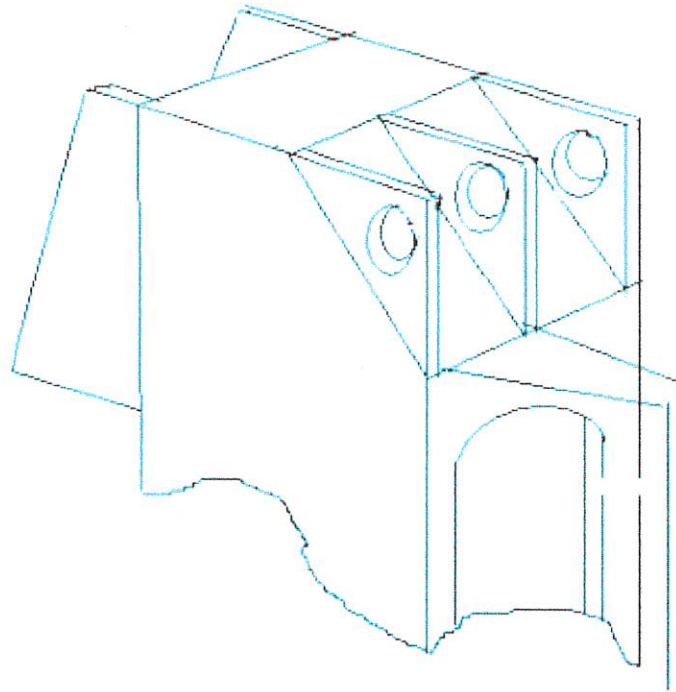
Successful bidder to provide a one year warranty on parts and labor.

Payment will be available one week after successful completion of installation checklist with the McLean County Highway Department.

Jerry Stokes
County Engineer
McLean County, Illinois

McLean County Highway Department Dump Bed Specifications

"A" Rear Corner post Details



**1.25 inches minimum clearance
between middle and outside hinge
plates**

**2021 McLean County Highway Department Equipment
Dump Bodies and Hoists**

Price per Unit

Cost for 1 New 14' Dump Body, Hoist and Central Hydraulics
on new 2021 T470 Kenworth Cab and Chassis

Price for Complete installation per truck

Total Price to McLean County Highway Department for 2

Approximate Delivery Date:

Signature of Bidder:

Note: List any exceptions to specifications below: