

**HIGHWAY DEPARTMENT**

102 S Towanda Barnes Rd  
Bloomington, IL 61705  
Office: (309) 663-9445  
FAX: (309) 662-8038

---

**Addendum #1 – January 12<sup>th</sup>, 2021**

**McLean County Highway Department**

**Section: 20-00130-18-RS  
CH 13 (Colfax-Weston Road)**

1. Revise the pay item 35300100 – PCC Base Course, 6” as follows:

<u>Item No.</u>	<u>Item</u>	<u>Unit</u>	<u>Qty</u>
35300100	PCC Base Course, 6”	SQ YD	77

These changes have been updated to the plans and Schedule of Prices sheets, which are attached.

**NOTE: Read receipt or email response will confirm addendum received.**



F.A.S. R/E	SECTION	COUNTY	TOTAL SHEETS
349	20-00130-18-RS	MCLEAN	4
		ILLINOIS	1
		CONTRACT NO.	

**INDEX OF SHEETS**

- 1 COVER SHEET
  - 2 TYPICAL CROSS SECTIONS
  - 3 TYPICAL DETAILS
  - 4 INTERSECTION DETAILS
- STATE STANDARD DETAILS

**SUMMARY OF QUANTITIES**

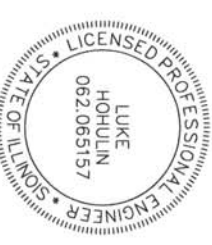
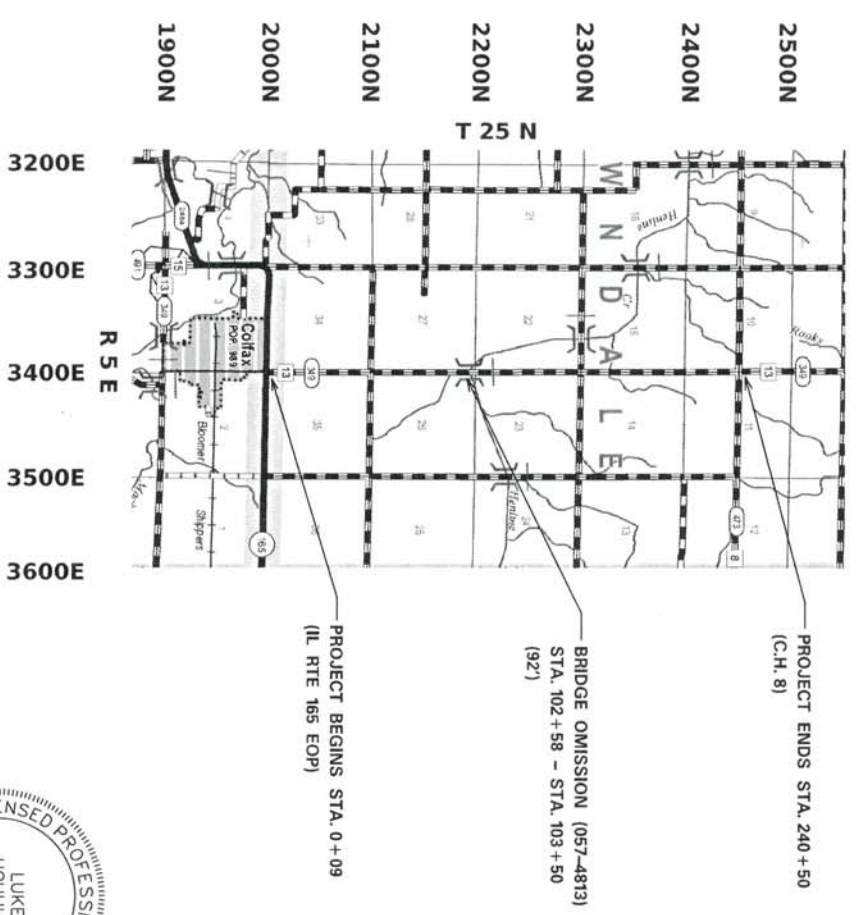
ITEM NUMBER	ITEM	UNIT	QUANTITY
20200500	EARTH EXCAVATION	CU YD	90
21001000	GEO TECHNICAL FABRIC FOR GROUND STABILIZATION	SQ YD	210
35101400	AGGREGATE BASE COURSE, TYPE B	TON	100
35300100	PCC BASE COURSE, 6"	SQ YD	71
40600290	BITUMINOUS MATERIALS (TRACK COAT)	POUND	40,500
40600990	TEMPORARY RAMP	SQ YD	125
40602965	HOT-MIX ASPHALT BINDER COURSE, IL-9.5 FG, N50	TON	2,435
40603310	HOT-MIX ASPHALT SURFACE COURSE, MIX "C", N50	TON	4,965
40800050	INCIDENTAL HMA SURFACING	TON	120
44000500	COMBINATION CONCRETE CURB & GUTTER REMOVAL	FT	190
48102100	AGGREGATE WEDGE SHOULDERS, TYPE B	TON	1,235
60609800	COMBINATION CONCRETE CURB & GUTTER, TYPE M-6.18	FT	340
78100100	RAISED REFLECTIVE PAVEMENT MARKERS	EACH	300
X4401198	HOT-MIX ASPHALT SURFACE REMOVAL, VARIABLE DEPTH	SQ YD	60,450
Z0055300	RUMBLE STRIP	EACH	4
Z0033700	LONGITUDINAL JOINT SEALANT	FOOT	23,949

**STATE OF ILLINOIS**

**DEPARTMENT OF TRANSPORTATION**

**PROPOSED HIGHWAY PLANS**

**F.A.S. ROUTE 349**  
**SECTION 20-00130-18-RS**  
**HMA OVERLAY**  
**MCLEAN COUNTY**  
**COLFAX-WESTON ROAD (C.H. 13)**  
**FUNDING: HIGHWAY**



NOTE: THE TOTAL LENGTH OF THE PROPOSED PROJECT IS 24,041 FEET WITH A NET LENGTH OF 23,949 FEET (4.54 MILES)

NOTE: THESE PLANS MEET THE MINIMUM REQUIREMENTS FOR A 3R IMPROVEMENT

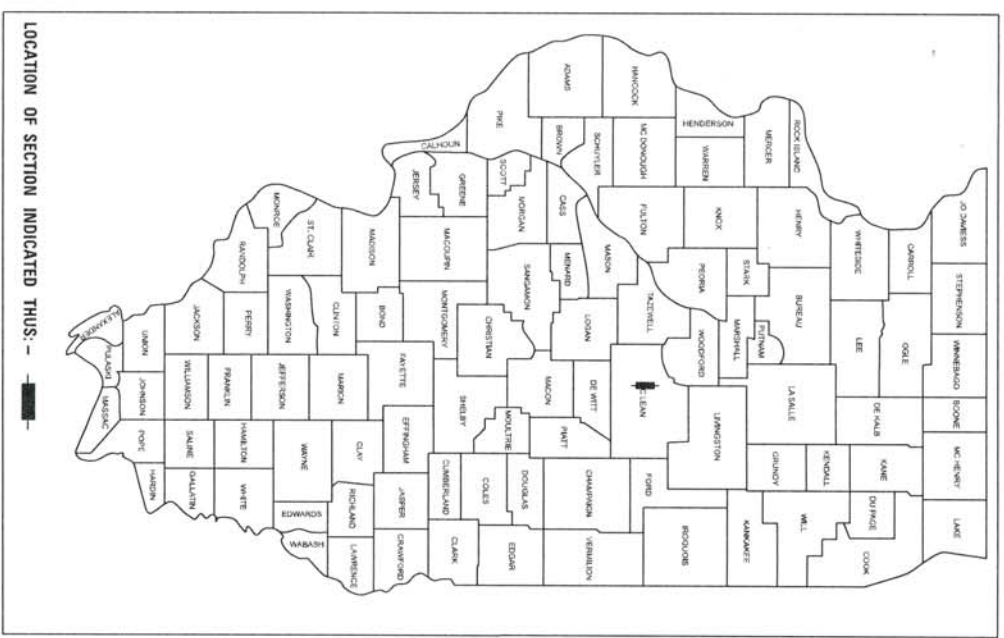
NOTE: CURRENT AOT = 750 (2015)

NOTE: FUNCTIONAL CLASSIFICATION: MAJOR COLLECTOR

THESE PLANS WERE MADE BY ME OR BY A MEMBER OF MY STAFF WORKING UNDER MY PERSONAL SUPERVISION.

DATE: 01/08/2021

LUKE HOHULIN, P.E.  
 NO. 062,065,157  
 EXPIRATION DATE 11/30/21



APPROVED January 8 20 21

Jerry Stebbins  
 COUNTY ENGINEER

STATE OF ILLINOIS  
 DEPARTMENT OF TRANSPORTATION

PASSED 20

AGREEMENT

DISTRICT FIVE ENGINEER OF LOCAL ROADS & STREETS

UNDERS TANDING

REGION THREE ENGINEER

**PRINTED BY THE AUTHORITY OF THE STATE OF ILLINOIS**

THESE PLANS ARE NOT TO SCALE

JULIE  
 JOINT UTILITY LOCATION INFORMATION FOR EXCAVATION  
 1-800-892-0123  
 OR 811

CONTRACT NO.