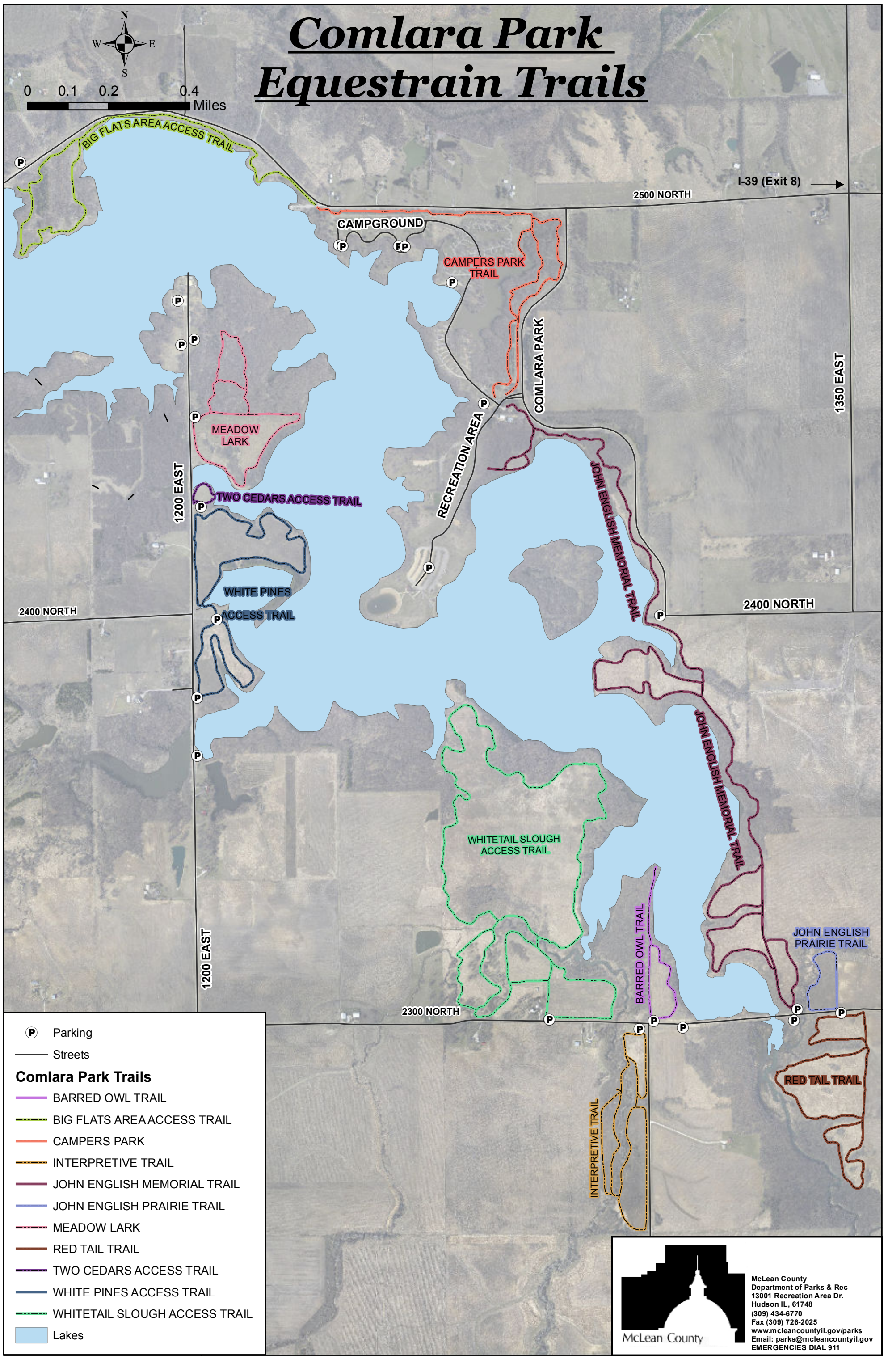


# Comlara Park

## Equestrian Trails



0 0.1 0.2 0.4 Miles



- Parking
- Streets
- Comlara Park Trails**
- BARRED OWL TRAIL
- BIG FLATS AREA ACCESS TRAIL
- CAMPERS PARK
- INTERPRETIVE TRAIL
- JOHN ENGLISH MEMORIAL TRAIL
- JOHN ENGLISH PRAIRIE TRAIL
- MEADOW LARK
- RED TAIL TRAIL
- TWO CEDARS ACCESS TRAIL
- WHITE PINES ACCESS TRAIL
- WHITETAIL SLOUGH ACCESS TRAIL
- Lakes



McLean County  
 Department of Parks & Rec  
 13001 Recreation Area Dr.  
 Hudson IL, 61748  
 (309) 434-6770  
 Fax (309) 726-2025  
[www.mcleancountyil.gov/parks](http://www.mcleancountyil.gov/parks)  
 Email: [parks@mcleancountyil.gov](mailto:parks@mcleancountyil.gov)  
 EMERGENCIES DIAL 911