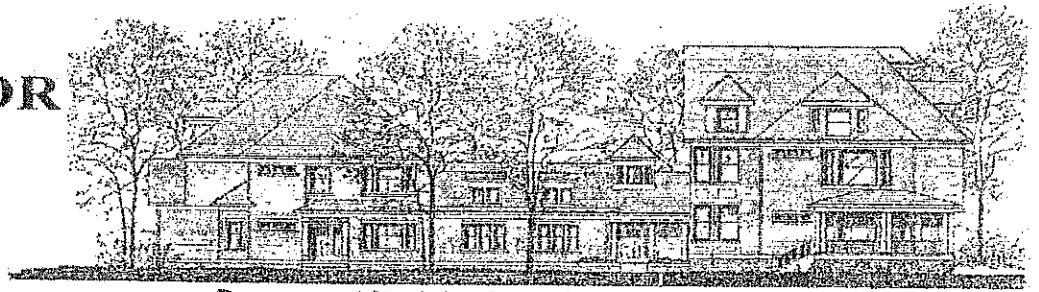


# MAYORS MANOR

504 W. Washington  
Bloomington, IL 61701  
Ph. (309) 827-2967  
Fax (309) 820-9646



Permanent Affordable Housing For Single Adults

07/13/16

Mayors Manor is permanent supportive housing. We have 26 efficiency apartments. Individuals must be low-income, have a documented disability, and be homeless at the time of screening for an open apartment.

Information about current Mayors Manor residents:

25 tenants and 1 vacant that will be filled 08/01/16  
(numbers below include this soon-to-be tenant)

16 males  
10 females

14 Caucasian  
12 African American  
0 Latino/Hispanic

17 tenants have a mental health diagnosis  
18 tenants have past and/or current SA issues  
11 tenants have co-occurring mental health and substance abuse issues

2 tenants have a cognitive disability

8 tenants have a physical disability

Ages:  
30 and under: 3  
31-40: 1  
41-50: 4  
51-60: 14  
61+: 4

\*5 tenants met the definition of chronic homeless when they moved in.



Mayors Manor  
504 West Washington Street  
Bloomington, IL 61701  
309-827-2967

## MAYORS MANOR INFORMATION HANDOUT

- Mayors Manor is Permanent Housing with Supportive Services for individuals who are homeless, disabled, AND of low income but have enough income to pay their portion of the rent. This is a program of Mid Central Community Action. Our funding comes through many different sources on the local, state, and federal levels with strict guidelines for residency.
- Applicants **MUST** meet the homeless criteria and have a documented disability. A documented disability could be someone receiving SSI, SSD, or have been in a treatment facility for drug or alcohol abuse. It could be someone who receives services from CHS, DHS, ORS or other community agencies/programs.
- The apartments are efficiency units for single adults over 18. Only one person is allowed per apartment. Units are 1 room with a kitchenette and a bathroom. Utilities are included in rent except phone and cable. The units are wired for phone and cable but installation and monthly bills are the tenant's responsibility.
- No pets are allowed (fish are OK if tank is 20 gallons or less).
- The units come furnished with a table, 2 chairs, a dresser, and a twin bed.
- There are rules and policies that all tenants must follow. Tenants must also follow a service plan with goals that must be worked on during residency. These goals are set-up with the assistance of the tenant's case manager.
- There are two types of units in the building. One is Low Income Supportive Housing with a maximum income guideline of \$28,600 a year. This unit has a monthly rent of \$341 a month and becomes available more frequently.
- The second type of unit is an Income Based unit. This unit currently has a maximum income guideline of \$28,600 a year. Rent for these units is approximately 30% of the monthly gross income and is determined by the Bloomington Housing Authority.
- To apply for residency, return a completed application with a copy of your SS card, a photo ID and birth certificate. Your name will go on the bottom of the waiting list. When a unit becomes available and your name comes up next on the list, you will be contacted for a screening interview by mail. This interview is to update information, to assess whether you meet the guidelines for the open unit, and to assess your appropriateness for residency at Mayors Manor.
- It is impossible to estimate how long an applicant will be on the list before you are contacted for an interview. It depends on a number of factors such as when tenants move out and how many are ahead of you on the waiting list.
- FOR PROSPECTIVE TENANTS: You need to put applications in at other places in addition to Mayors Manor. There is no guarantee you will qualify for an opening in this building. Please continue looking for other options for housing.
- It is vital that individuals on the waiting list update addresses and phone numbers so we can contact them for a screening appointment. If we are unable to contact you, your name will be removed from the active waiting list.
- Mayors Manor is a completely SMOKE FREE building. There is a designated outdoor space to smoke.

Revised 01/01/2016